



VYBO Electric products

Catalog of references



SOLUTIONS FOR INDUSTRY



Introduction



Company

VYBO Electric is a Hi-tech manufacturing plant and supplier of industrial electric motors with wide range of products. Manufacture plant is located in European Union in the Slovak Republic in Spisska Nova Ves in the Central Eastern part of the country. We have extensive experience in the production of electric motors and in the design of electric drive itself.



More than 120 years of the electrical industry in our region...

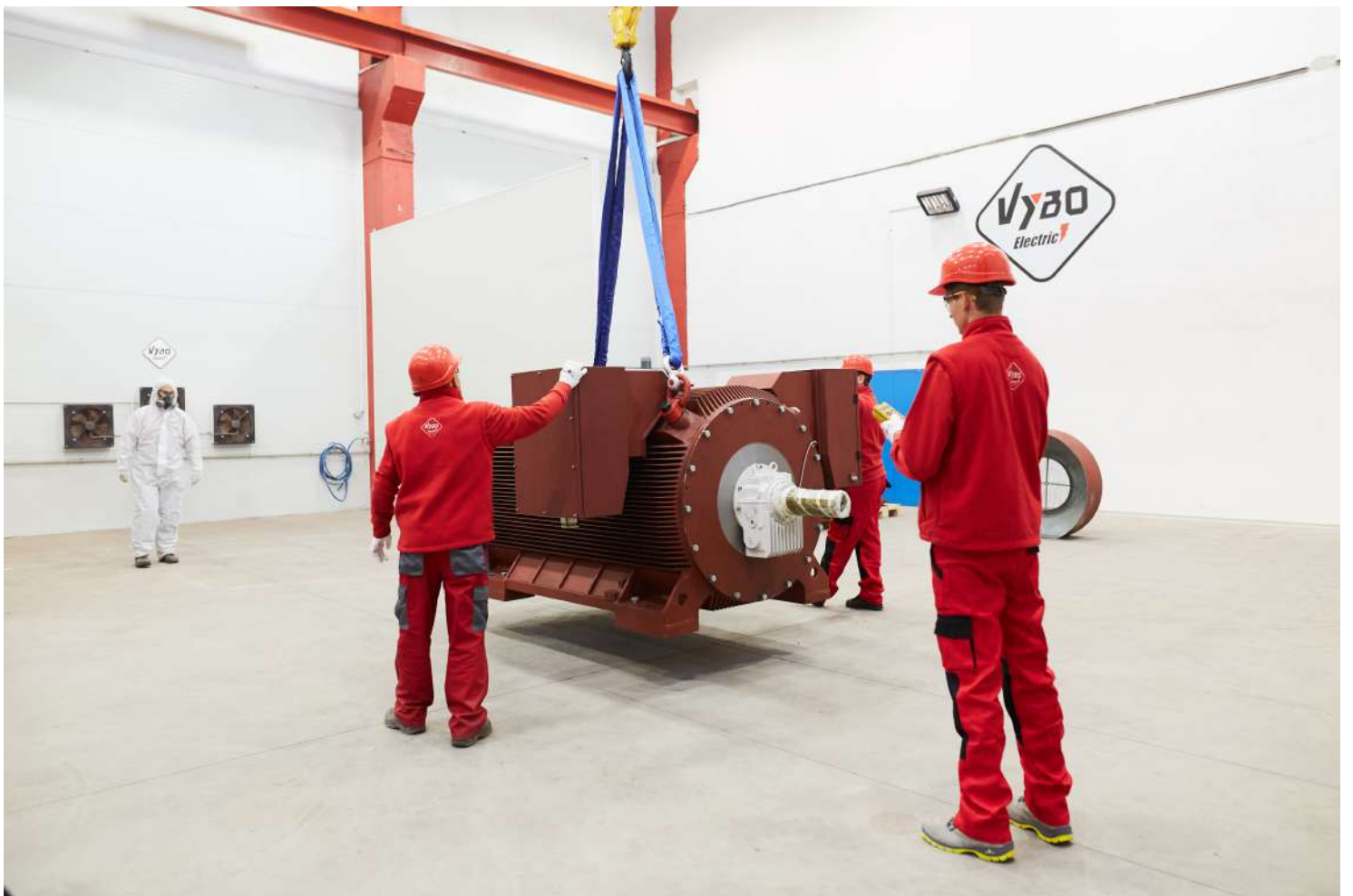
The location has been known for the electrotechnical industry and also for the manufacture of electric motors and electrotechnical equipment for over 120 years. The Slovak Republic is still one of the leading manufacturers of electric and technical equipment.

Maximum quality, maximum flexibility and superfast delivery times...

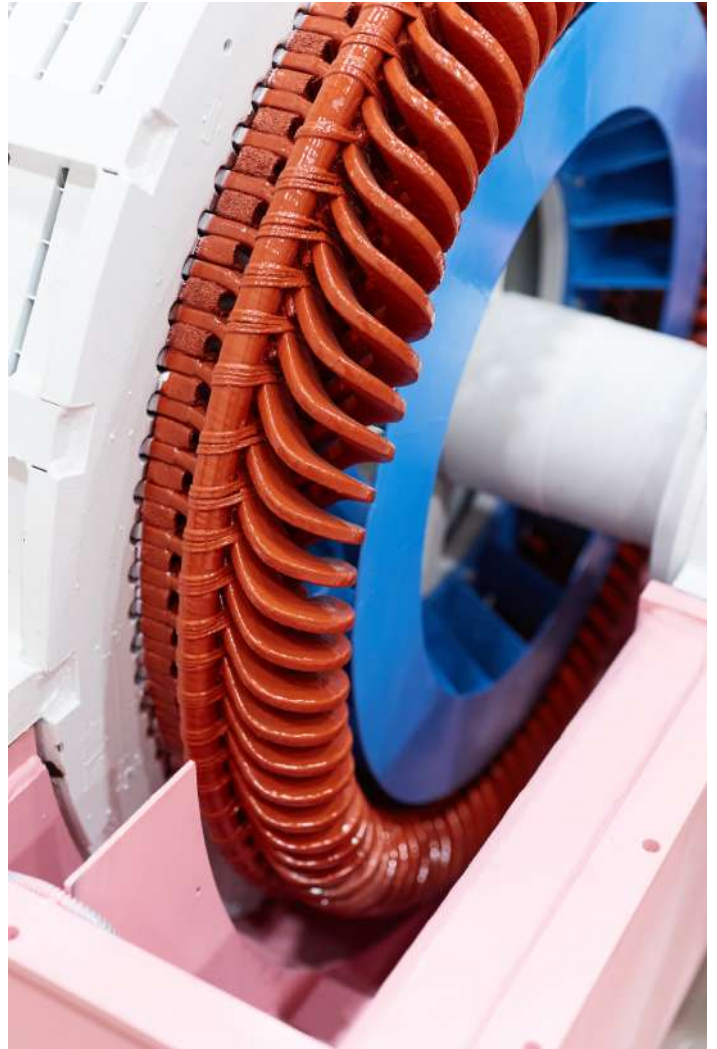
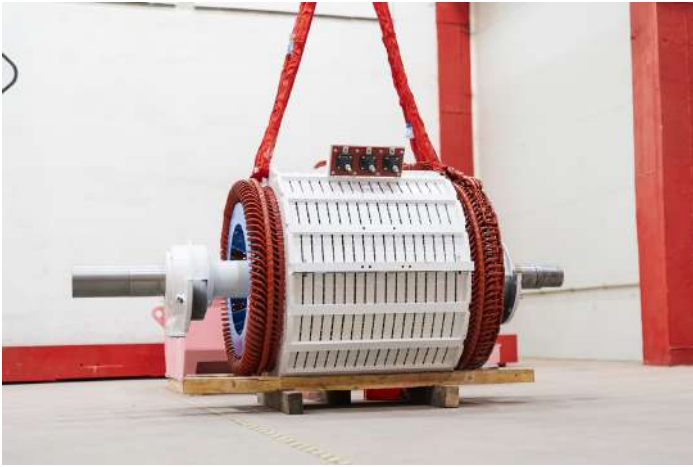
VYBO Electric is a specialist for high-tech, high efficiency big power and high voltage motors. The company is one of the leading suppliers of big power and medium, high voltage motors in European union.





















Briefing of construction

A steel plate welded construction has used to reduce the frame weight and increase the rigidity, optimum construction design also makes series motors convenience for installation and maintenance.

One piece laminations for the stator and rotor are precision-stamped form low loss electrical steel, thus the iron loss is minimized and the efficiency is improved.

The insulation class of series motors is class F. The stator coil is a double layer formed coil, the stator core is stacked and assembled with coils outside the frame, coil braces are applied on the circumference of the stator coil ends with spacers inserted between coils to improve rigidity. After the connection between coils is made, the completed stator winding is placed in a vacuum tank and impregnated, then the stator winding is put into the stator frame and fixed with it.

The standard design of the rotor is of copper bar construction, depending on starting conditions, the rotor bar are made of copper or copper alloy. Advanced brazing technology of the rotor bars to the end rings insures mechanical integrity and results in uniform strength and electrical conductivity at the brazed joints. By swaging the rotor bars against the slot sides, the vibrations of rotor bars to electromagnetic force or centrifugal force are eliminated and insure long motor life.

For the frame size below shaft height 500mm, the cast aluminum rotor construction is also possible. Because of the tight fitness between the rotor conductor and slot sides, the heat generated in the rotor conductor is easy to be dissipated, the safety locked rotor time is longer and the permitted moment of inertia to be driven by the motor is bigger.

For 2P motors form H355~H450 and all 4~12P motors, the stanard designed series motors adopt anti-friction bearings, self-lubricated with grease or oil according to motor's frame size and operating speed, separate oil supply system is not needed. Split sleeve bearings are sed for 2Pmotor from H500~H630 or when specified by purchaser, they are either ring-lubricated or forced-oil lubricated depending pon the loading.

The rotor cores are shrunk onto the shaft and rotor coils are tightly fitted into the slots to minimize vibration. Advanced brazing technology of the rotor coils to coils insures high mechanical strength and good electrical conductivity at the brazed joints. The coil ends are supported by bandage. The rotor winding is vacuum pressure impregnated(VPI) and connected to the slip ring unit. This construction gives the rotor an excellent fit against centrifugal forces.

The slip ring unit is mounted outside the frame to the non-drive end in order to provide easy maintenance without disassembling the motor. As a result, the bearing are closer together, preventing any vibration. Carbon dust, caused by brush wear, is prevented from entering the motor due to the unit. The slip ring unit has a shaft mounted fan and an easily removable and washable filter located in the slip ring housing to collect the carbon dust caused by brush wear.



Quality management and certificates



VYBO Electric is a modern High-tech energy saving company that pays high attention to quality, environment, safety and precision and efficiency of work and energy in production. Therefore, it holds a lot of certificates and quality control systems. **Our priority is quality control.**

Basic certificates include:

ISO9001

The primary task of the ISO 9001 standard is to focus on system management and quality management in the organization. The satisfaction of the customer and the fulfillment of his requirements, which are specified in contracts, orders, or technical drawings, are in the first place. The quality management system is linked to all processes in the company. The standard focuses on the management of human and financial resources, on the stability of infrastructure, including buildings, transport, hardware, software and other communication or information technologies. An important part is also the planning of production and services, the management of the purchasing process, but also the management of non-conforming products.



ISO14001

The main priority of the ISO 14001 standard is to identify and understand the environmental aspects and activities that are related to the entire infrastructure of the company and, based on this, to regulate the environmental impact on the environment.

In its scope, the ISO 14001 standard creates the conditions for determining environmental goals and plans, the fulfillment of which is examined at regular intervals by top management and also by an independent body during internal audits.

This standard is intended for all organizations and companies that consider environmental protection as their primary goal.

The benefit of the standard for society is mainly:

- control over the environmental impact on the environment
- control over produced emissions and waste
- saving material and energy
- prevention of accidents
- compliance of the company's activities with legal requirements
- zero fines for environmental behavior
- creation of a good reputation and prestige of the company



The ISO 45001

Specification (formerly known as OHSAS 18001) is an internationally recognized standard that declares compliance with the principles of a safe enterprise, managing risks at work and protecting the health of workers during work. It does not only concern danger and accidents, but also emphasizes other aspects such as the good condition and mental well-being of the employee.

The certificate is held in Slovakia as STN ISO 45001:2019 and is under the title Management systems of safety and health protection at work. Requirements with guidance for use. It replaces the STN OHSAS 18001 standard.



ISO50001

Energy management systems Energy efficiency help organizations save money, save energy resources and also help to prevent climate change. ISO 50001 encourages organizations in all sectors to use energy more efficiently through the development of an energy management system. The international standard ISO 50001: 2011 specifies the requirements for building, maintaining and improving the energy system. It aims to enable organizations to implement a systematic approach that will help achieve lasting improvements in energy efficiency, energy use and consumption.



	Selected reference projects VYBO Electric a.s.	
Country	Selected reference projects in the last time	Cooling
Poland	Asynchronous electric motor H17R-630-02 6000V 2400 kW 2991 rpm/min, sleeve bearings-RENK,IC411	IC411
Estonia	Asynchronous electric motor H17RL560-04,1500 kW; D660V, 50Hz; B3,IC416, VFD	IC411
Estonia	Asynchronous electric motor H17R-560-6,1250kW,6poles,6000V	IC411
Great Britain	Slip ring asynchronous electric motor H27R-SR-500-04,1250kW,F/B,IP55, voltage- 10 000V	IC611
Estonia	Asynchronous electric motor H17R-500-4, 900kW,4poles,6000V,IC411	IC411
Poland	Asynchronous electric motor H27R-500-06,1900kW,6poles,6000V ins. H/F, IP55,IC611	IC611
Romania	Asynchronous electric motor H27RT-710-04,1000kW,6000V,4poles,IC511	IC511
Czech republic	Asynchronous electric motor H27R630-6, 3000kW 6pole, Y6000V, 50Hz, S1, IP55, Izol F/F, IC611, IM B3, weight-12 000kg	IC611
Czech republic	Asynchronous electric motor H27R630-6, 3000kW 6pole, Y6000V, 50 Hz, S1, IP55, Izol F/F, IC611, IM B3,weight-12 000kg	IC611
Czech republic	Asynchronous electric motor H27R630-6, 3000kW 6pole, Y6000V, 50 Hz, S1, IP55, Izol F/F, IC611, IM B3,weight-12 000kg	IC611
Czech republic	Slip ring asynchronous electric motor, wound rotor H27R-SR-560-06-800, 1000 kW, 6pole	IC511
Germany	Slip ring asynchronous electric motor H27R-SR-630-06, 950kW, 6pole, efficiency 95.5%	IC511
Czech republic	Asynchronous electric motor H17R-500/630Z-4, 1350 kW, 6000 V, 1480 ot., IMB3	IC416
Mali	Asynchronous electric motor H27R-500-04, 800kW 3300V, IM B3,isol. F/B, IC411	IC511
Czech republic	Asynchronous electric motor H27R-630-08, 800kW, 8pole, Y6000V, IP55, IC511, izol. F, IM B3	IC511
Czech republic	Asynchronous electric motor H27RG-800-1120-K10/12, 1700/1000 kW, 10/12P, 6000V/6000V, 50Hz/50Hz,weight-15 000kg	IC01
Czech republic	Asynchronous electric motor H27RG-800-1120-K10/12, 1700/1000 kW, 10/12P, 6000V/6000V, 50Hz/50Hz,weight-15 000kg	IC01
Czech republic	Asynchronous electric motor H27RG-800-1120-K10/12, 1700/1000 kW, 10/12P, 6000V/6000V, 50Hz/50Hz,weight-15 000kg	IC01

Mali	Asynchronous motor H17RWS-500-04 / 500; 3300V, 900 kW,IP55,IM B3,S1, welded steel frame	IC411
Mali	Asynchronous motor H17RWS-500-04 / 500; 3300V, 900 kW,IP55,IM B3,S1, welded steel frame	IC411
Spain	Asynchronous electric motor H17RL-400-04, 800kW, 4pole, 400/690 (D/Y), IC411, IP55, IM B3	IC411
Spain	Asynchronous electric motor H17RL-400-04, 800kW, 4pole, 400/690 (D/Y), IC411, IP55, IM B3	IC411
Spain	Asynchronous electric motor H17RL-400-04, 800kW, 4pole, 400/690 (D/Y), IC411, IP55, IM B3	IC411
Spain	Asynchronous electric motor H17RL-400-04, 800kW, 4pole, 400/690 (D/Y), IC411, IP55, IM B3	IC411
Spain	Asynchronous electric motor H27R-630-06-500, 1750kW, Y6000V, 50Hz, IC611,IP55, IM B3	IC611
Spain	Asynchronous electric motor H27R-630-06-500, 1750kW, Y6000V, 50Hz, IC611,IP55, IM B3	IC611
Slovenia	Asynchronous electric motor H17R-355-04-CR, 500kW, 4pole, IC411, IP55, IM V1+double angular bearings	IC411
Slovenia	Asynchronous electric motor H17R-355-04-CR, 500kW, 4pole, IC411, IP55, IM V1+double angular bearings	IC411
Slovenia	Asynchronous electric motor H17R-355-04-CR, 500kW, 4pole, IC411, IP55, IM V1+double angular bearings	IC411
Slovenia	Asynchronous electric motor H17R-355-04-CR, 500kW, 4pole, IC411, IP55, IM V1+double angular bearings	IC411
Slovenia	Asynchronous electric motor H17R-355-04-CR, 500kW, 4pole, IC411, IP55, IM V1+double angular bearings	IC411
Slovenia	Asynchronous electric motor H17R-355-04-CR, 500kW, 4pole, IC411, IP55, IM V1+double angular bearings	IC411
Slovenia	Asynchronous electric motor H17R-355-04-CR, 500kW, 4pole, IC411, IP55, IM V1+double angular bearings	IC411
Slovenia	Asynchronous electric motor H17R-355-04-CR, 500kW, 4pole, IC411, IP55, IM V1+double angular bearings	IC411
Slovenia	Asynchronous electric motor H17R-355-04-CR, 500kW, 4pole, IC411, IP55, IM V1+double angular bearings	IC411
Slovenia	Asynchronous electric motor H17R-355-04-CR, 500kW, 4pole, IC411, IP55, IM V1+double angular bearings	IC411
Slovenia	Asynchronous electric motor H17R-355-04-CR, 500kW, 4pole, IC411, IP55, IM V1+double angular bearings	IC411
Slovenia	Asynchronous electric motor H17R-355-04-CR, 500kW, 4pole, IC411, IP55, IM V1+double angular bearings	IC411
Czech republic	Asynchronous electric motor H17R-315-04 200kW 4pole, 6000V, IC411, IP55, IM B3	IC411

Czech republic	Asynchronous electric motor H17R-315-04 200kW 4pole, 6000V, IC411, IP55, IM B3	IC411
Czech republic	Asynchronous electric motor H17R-315-04 200kW 4pole, 6000V, IC411, IP55, IM B3	IC411
Czech republic	Asynchronous electric motor H17R-315-04 200kW 4pole, 6000V, IC411, IP55, IM B3	IC411
Czech republic	Asynchronous electric motor H17R-315-04 200kW 4pole, 6000V, IC411, IP55, IM B3	IC411
Czech republic	Asynchronous electric motor H17R-315-04 200kW 4pole, 6000V, IC411, IP55, IM B3	IC411
UAE	Asynchronous electric motor H17RL355-4-4,500kW,2poles,400/690V,F/B	IC411
UAE	Asynchronous electric motor H17RL355-4-4,500kW,2poles,400/690V	IC411
UAE	Asynchronous electric motor H17RL355-4-4,500kW,2poles,400/690V	IC411
UAE	Asynchronous electric motor H17RL355-4-4,500kW,2poles,400/690V	IC411
UAE	Asynchronous electric motor H17RL355-4-4,500kW,2poles,400/690V	IC411
Slovenia	Asynchronous electric motor H27R500-06, 800 kW, 990 rpms,6000V,IP55, IC611	IC611
Slovenia	Asynchronous electric motor H27R500-06, 800 kW, 990 rpms,6000V,IP55, IC611	IC611
Slovenia	Asynchronous electric motor H27R500-06, 800 kW, 990 rpms,6000V,IP55, IC611	IC611
Slovenia	Asynchronous electric motor H17R-315-500-CR-04, 200kW, 4pole, Y6000V, 50Hz, Izol F, CU rotor, IC411, IP54, IM 1001	IC411
Slovenia	Asynchronous electric motor H17R-315-500-CR-04, 200kW, 4pole, Y6000V, 50Hz, Izol F, CU rotor, IC411, IP54, IM 1001	IC411
Slovenia	Asynchronous electric motor H17R-315-500-CR-04, 200kW, 4pole, Y6000V, 50Hz, Izol F, CU rotor, IC411, IP54, IM 1001	IC411
Slovenia	Asynchronous electric motor H17R-315-500-CR-04, 200kW, 4pole, Y6000V, 50Hz, Izol F, CU rotor, IC411, IP54, IM 1001	IC411
Slovenia	Asynchronous electric motor H17R-315-500-CR-04, 200kW, 4pole, S1, Y6000V, 50Hz, IP54, IC411, Izol F, CU rotor, IM 1001	IC411
Slovenia	Asynchronous electric motor H17R-315-500-CR-04, 200kW, 4pole, S1, Y6000V, 50Hz, IP54, IC411, Izol F, CU rotor, IM 1001	IC411
Slovenia	Asynchronous electric motor H17R-315-500-CR-04, 200kW, 4pole, S1, Y6000V, 50Hz, IP54, IC411, Izol F, CU rotor, IM 1001	IC411
Slovenia	Asynchronous electric motor H17R-315-500-CR-04, 200kW, 4pole, S1, Y6000V, 50Hz, IP54, IC411, Izol F, CU rotor, IM 1001	IC411

Slovenia	Asynchronous electric motor H17R-315-500-CR-04, 200kW, 4pole, S1, Y6000V, 50Hz, IP54, IC411, Izol F, CU rotor, IM 1001	IC411
Belgium	Asynchronous electric motor H17R-355-04, 405kW, 4pole, D3000V, 50Hz, IC411, IP55, IM B3	IC411
Czech republic	Asynchronous electric motor H27R-SR-710-0 800 kW, 6pole, 3kV, 93A,	IC511
Czech republic	Asynchronous electric motor H27R-710-06,630kW,6 poles,IsoIF/B,6000V,IP55, IC511	IC511
Czech republic	Asynchronous electric motor H17RT-355L-4 200kW 4pole, 3kV, 50Hz, IM B3	IC511
Croatia	Slip ring Asynchronous electric motor H27R-SR-630-06, 860kW, 6pole Y6000V, 50Hz, S1, IP55, Izol F, IC37, RAL7030IM B3	IC37
Egypt	Slip ring Asynchronous electric motor H17R-SR-355-06-400, 315kW, 6pole, Y6300V, temp. class F/F, IC411, IP55, IM B3	IC411
Estonia	Asynchronous electric motor H17RL-355-02, 400kW, 2pole, 400/690V, 50Hz, Izol H, IC411, IP55, IM B3	IC411
Estonia	Asynchronous electric motor 3LCX-355L-6, 300kW, 6pole, IC411, IP55, IM B3	IC411
Finland	Asynchronous electric motor 3LC-355LX-4, 400kW, 4pole, IC411, IP55, IM V15	IC411
Finland	Asynchronous electric motor 3LC-315LX-4, 250kW, 4pole, IC411, IP55, IM V15	IC411
France	Asynchronous electric motor 2LC-315XL-6, 250 kW, 6pole, IC411, IP55, IM B3	IC411
France	Asynchronous electric motor 3LC-355M-6, 225 kW, 6pole, 400/690V (J/J), 50 Hz, IC411, IP55, Iso F, S1	IC411
Germany	Asynchronous electric motor 3LC400L-8, 355kW, 8pole, 400V, 50Hz, S1, IP55, IC411	IC411
Nigeria	Asynchronous electric motor 3LC-355L-4, 355kW, 4 pole, 400/690V (D/Y), 50Hz, temp. class F, IC411, IP55, IM B3	IC411
Slovakia	Asynchronous generator H17ROL-450-14-560, 250kW, D400V, IC411, IP55, IM B3	IC411
Slovakia	Asynchronous electric motor 3LC355L1-6, 250 kW, IC411, IP55, IM B3	IC411
Slovakia	Asynchronous electric motor H17RT 355X-4, 250kW, 4pole, Y6000V, 50Hz, IM 1001	IC511
Spain	Slip ring Asynchronous electric motor 407kW, 10poles, 6300V, 50 Hz, IC511, IM V1, Service factor 2.1, weight 10500kg	IC511
Taiwan	Asynchronous electric motor 3LC-355L-6, 200kW, 6pole, 380/660V, 50Hz, Izol F, IC411, IP55, IM B3	IC411
Turkey	Asynchronous electric motor H17R-400-06, 630kW, 6pole, Y6000V, 50Hz, temp. class F, IC411, IP55, IM B3	IC411

Czech republic	Asynchronous electric motor, H17RL-450-10,600kW, 593 ot., D 400V, 50Hz, IP55, IM B3,isol.H,temp rise B	IC411
Czech republic	Asynchronous electric motor H27R-560-06, 900 kW, 6pole, Y6000V, 50Hz, IP33 IM B3	IC611
Czech republic	Asynchronous electric motor 3LC-355L-2, 355kW, 2pole, IP55, IC416, IM B3	IC416
Czech republic	Asynchronous electric motor 3LC355L-4, 355 kW, 4pole, IC411, IP55, IM B3	IC411
Czech republic	Asynchronous electric motor 3LC355L-4, 355 kW, 4pole, IC411, IP55, IM B3	IC411
Czech republic	Asynchronous electric motor H17R-600-06, 400 kW, 6pole, Y6000V, 50 Hz, IP54, IC411, Izol F - IM 1001	IC411
Czech republic	Asynchronous electric motor H27RT-600S-8, 315 kW, 8pole, Y6000V, 50Hz, S1, IP54, Izol F, IM 1001	IC511
Czech republic	Asynchronous electric motor H17R-ODP-355Y-2, 400kW,2 poles,6000V,IC01, IP23,IM B3	IC01
Czech republic	Asynchronous electric motor H17R-ODP-355Y2, 400kW2 poles,6000V,IC01, IP23,IM B3	IC01
Czech republic	Asynchronous electric motor 3LC-355L-4, 315kW, 4pole, IC411, IP55, IM B3	IC411
Czech republic	Asynchronous electric motor 3LCR-315LX-2-Z, 250kW, 2pole, IC411, IP55, IM B3	IC411
Czech republic	Asynchronous electric motor 3LC-315L-4, 200kW, 2pole, D400V, 50Hz, IC416, IP55,IM B35	IC416
Croatia	Slip ring Asynchronous electric motor H30R-SR-630-06, 860kW, 6pole, Y6000V, 50Hz, IM B3	IC37
Denmark	Asynchronous electric motor H17RL-355-08-Z, 350kW, 8pole,VFD duty, D400V, IP55, temp.class F/F, IC416, IM B3	IC416
Finland	Asynchronous electric motor 3LC-315L-4, 250kW, 4pole, IC411, IP55, IM V15,	IC411
Finland	Asynchronous electric motor 3LC-315L-4, 250kW, 4pole, IC411, IP55, IM V15,	IC411
Finland	Asynchronous electric motor 3LC-355LX-4, 400kW, 4pole, IC411, IP55, IM V15,	IC411
Finland	Asynchronous electric motor 3LC-355LX-4, 400kW, 4pole, IC411, IP55, IM V15,	IC411
Finland	Asynchronous electric motor 3LC-315L-4, 250kW, 4pole, 400/690V, 50Hz, IP65, Izol F, IC411, IM V1 (IM B35)	IC411
Finland	Asynchronous electric motor 3LC-355LX-4, 400kW, 4pole, 400/690V, 50Hz, IP65, Izol H/F, IC411, IM V1 (IM B35)	IC411
Finland	Asynchronous electric motor 3LC-315L-4, 250kW, 4pole, IC411, IP55, IM V1	IC411

Finland	Asynchronous electric motor 3LC-355LX-4, 400kW, 4pole, IC411, IP55, IM V1,	IC411
Finland	Asynchronous electric motor 2LC-315L-4, 250kW, 4pole, temp. class F/F, IC411, IP55, IM V15	IC411
Finland	Asynchronous electric motor 3LC-355LX-4, 400kW, 4pole, temp. class F/F, IC411, IP55, IM V15,	IC411
France	Asynchronous electric motor H27R-450-08, 355 kW, 8pole, 550V, S1, IP54, 50Hz,temp class F/B,IC511 special frame	IC511
France	Asynchronous electric motor H27R-500-08, 405kW, 8pole, Y5500V, 50Hz,temp class F/B,IC511 special frame	IC511
Netherlands	Asynchronous electric motor H27R-500-08, 210 kW, 8pole,6000V,Vertical IMV1+ special flange,IP55,IC511,Isol F/B	IC511
Netherlands	Asynchronous electric motor H27R-500-08,210 kW, 8pole,Vertical IMV1+ special flange,IP55,IC511,Isol F/B	IC511
Netherlands	Asynchronous electric motor H17RL-355-02, 400 kW, 2pole, Y690V, 50Hz, S1, IC411, IP55, Izol H, IM B3	IC411
Ireland	Asynchronous electric motor H17RL-400-04-K, 630kW, 4pole, D400V, 50Hz, IC411, IP55, IM B3	IC411
Latvia	Asynchronous electric motor 4LC-355LX-04, 400kW, 4pole, 400/690V (D/Y), 50Hz, IP55, temp. class H/B, IC411, IM B3	IC411
Latvia	Asynchronous electric motor 3LC-355LX-4, 400kW, 4pole, D400V, temp. class F/F, IC411, IP55, IM B3	IC411
Chille	Asynchronous electric motor, H17RL-450-06, 900kW, 6poles, D690V, 50Hz, S1, IC411, IP55, Izol F / B - IM B3	IC411
Chille	Asynchronous electric motor H17RL-450-06, 900kW, 6pole, D690V, 50Hz, S1, IP55, IC416, IM B3	IC416
Nigeria	Asynchronous electric motor 3LC-355L-4, 355kW, 4pole, 400/690V (D/Y), 50Hz, temp. class F, IC411, IP55, IM B3,	IC411
Singapore	Asynchronous electric motor H27R-710-10, 800kW, 10pole, Y6000V, 50Hz, IM B3	IC611
Singapore	Asynchronous electric motor, H17RL-355-02L 560KW, 2pole, 400V, 50Hz, IC411, IP55, IM B3	IC411
Singapore	Asynchronous electric motor, H17RL-355-02L-Z 560KW, 2pole, 400V, 50Hz, IC411, IP55, IM B3	IC411
Slovakia	Asynchronous generator H17ROL-450-14-560, 220kW, D400V, IM B3	IC01
Slovakia	Asynchronous electric motor H17RL-400-06, 560kW, 400V, 50Hz, IC411, IP55, IM ??	IC411
Slovakia	Asynchronous electric motor H17RO-315L-2, 220kW, 2pole, D400V, 50Hz, S9, IM B3, IEC60034	IC01
Slovakia	Asynchronous electric motor 3LC315L2-4, 200kW, 4pole, IC411, IP55, IM B3	IC411

Slovakia	Asynchronous generator H17ROL-450-14-560, 250kW, D400V, IM B3	IC01
Slovenia	Asynchronous electric motor H27R-500-06, 315kW, 6pole, Y6000V, 50Hz, S1, IP55, IC511, Izol F, IM B3,brass bar rotor	IC511
Slovenia	Asynchronous electric motor H27R-500-06, 315kW, 6pole, Y6000V, 50Hz, S1, IP55, IC511, Izol F, IM B3	IC511
Slovenia	Asynchronous electric motor H27R-500-06, 315kW, 6pole, Y6000V, 50Hz, S1, IP55, IC511, Izol F, IM B3	IC511
Slovenia	Asynchronous electric motor H27R-500-06, 315kW, 6pole, Y6000V, 50Hz, S1, IP55, IC511, Izol F, IM B3	IC511
Slovenia	Asynchronous electric motor H17RK-355-04-475, 355kW, 4pole,Y6000V, 50Hz, S1, IC411, IP55, Izol F/B, IM 1001	IC411
Slovenia	Asynchronous electric motor 3LC-355L-4, 315 kW, 4pole, 400/690V (D/Y), 50 Hz, S1, temp. class F/B, IC411, IM B3	IC411
Slovenia	Asynchronous electric motor 3LC-355L-4, 315 kW, 4pole, 400/690V (D/Y), 50 Hz, S1, temp. class F/B, IC411, IM B3	IC411
Slovenia	Asynchronous electric motor 2LC-355M-4, 315kW, 4pole, 400/690V (D/Y), 50Hz, S1, IP55, temp.class F/F, RAL5012, IC411	IC411
Spain	Slip ring Asynchronous electric motor H27R-SR-400-06, 400kW, 6pole, 3100V, 50Hz,special forced cooling	IC616
Spain	Slip ring Asynchronous electric motor H27R-SR-500-06, 650kW, 6pole, 3100V, 50Hz,special forced cooling from right side	IC666
Spain	Asynchronous electric motor H17RL-400-06, 400kW, 6pole, IC411, IP55, IM B3	IC411
Spain	Asynchronous electric motor H17RLA-400-06-K, 400kW, 6pole, IC411, IP55, IM B3	IC411
Venezuela	Asynchronous electric motor 17R-368-04, 1000Hp, 4pole, D4160V, 60Hz, IM B3,NEMA norm	IC411
Spain	Slip ring Asynchronous electric motor H17RL-SR-525-06, 355kW, 6pole, D500V, S1, IP55, Izol F, IC411, RAL7030, IM B3	IC411
Spain	Asynchronous electric motor VFD duty H17RL-450-06, 600kW, 6pole, D550V, 50Hz, IC411, IP55, IM B3	IC411
Spain	Asynchronous electric motor 4LC355L-4, 355kW, 4pole, 400/690V, 50Hz, S1, IP55, IC411, IM B3,IE4-premium eff.	IC411
Spain	Asynchronous electric motor H17RK-355-04, 400kW, 4pole, Y6300V, 50Hz, IC411, IP55, IM B3	IC411
Spain	Asynchronous electric motor 3LC-355ML-6, 200kW, 6pole, 400/690V (D/Y), 50 Hz, S1, IP55, Izol F, Temp. rise B, IC416	IC416
Spain	Asynchronous electric motor 4LC315L-4, 200kW, 4pole, IC411, IP55, IM B3	IC411
Sweden	Asynchronous electric motor H17RL-400-04-630, 700kW, star 500V, 50Hz, S6-60%, IC411, IP55, IM B3	IC411

Sweden	Asynchronous electric motor 3LC355L-2, 410kW, 2pole, IC411, IP55, VFD duty IM B3	IC411
Taiwan	Asynchronous electric motor H17R-355-06, 315kW, 6pole, D3300V, 60Hz, IC411, IP55, IM B3	IC411
Turkey	Asynchronous electric motor H17RL-400-02, 630kW, 2pole, temp. class H/F, IC411, IP55, IM B3	IC411
United Kingdom	Asynchronous electric motor 4LC355L-4, 400kW, 4pole, 400/690V, 50Hz, S1, IP55, IC411, Izol H, IM B3	IC411
Slovenia	Asynchronous electric motor H17R-450L-6, 850kW, 6pole, IC411, IP55, IM B3	IC411
Italy	Asynchronous electric motor VFD duty H17RL-400-04, 800kW, 4pole, D460V/Y690V, 60Hz, S1, IP55, Izol H/ B, IC411, IM B3	IC411
Mali	Asynchronous electric motor H27R-500-04, 800kW 3300V, IM B3,isol. F/B, IC411	IC511
Czech republic	Asynchronous electric motor H27R-630-08, 800kW, 8pole, Y6000V, IP55, IC511, izol. F, IM B3	IC511
United Kingdom	Slip ring asynchronous electric motor H27R-SR-355-04-Z, 700 kW, 4pole, Y6600V, 50Hz, IP55, IM B3,special extreme presurised highe power version	IC666
Czech republic	Asynchronous electric motor H27R630Z-10, 630kW 10pole, 6000V, 50Hz, IP54, IC511, F/F, IM B3	IC511
Croatia	Asynchronous electric motor H17RDCR-500-06, 630kW, 6pole, Y6000V, SF=1.15, IC411, Special copper double cage rotor	IC411
Estonia	Asynchronous electric motor H17RL-355-04, 630kW, 4pole, Y660V, IC416, IP55 IM B3	IC416
Slovakia	Asynchronous electric motor H17R-400-06-710, 630kW, 6pole, Y6000V, 50Hz, S1, IC411, IP55, temp.class F/ F, IM ??	IC411
Slovakia	Asynchronous electric motor 1YF-710S-6, 630kW, 6pole, 1Y6000V, 50Hz, S1, IP55, Izol F, IC511, IM B3	IC511
Sweden	DC electric motor 1GDC-400-04, 620kW, 600V, temp. class F/F, IM B3	IC06
Latvia	Asynchronous electric motor H17RLC-400-02-Z, 560kW, 2pole, Y700V, IC411, IP55, IM B3	IC411
Czech republic	Asynchronous electric motor H17RL-400-04, 630kW, 4pole, 400/690V, temp. class F, IC411, IP55, IM B3	IC411
Czech republic	Asynchronous electric motor H27R-710-06, 500kW, 6pole, Y6000V, 50Hz, S1, IP54, IM1001/700 IM B3	IC511
Czech republic	Asynchronous electric motor H27R-500Y-6, 500kW, 6pole, Y6000V, 50 Hz, S1, IP54, Izol F, IC511, IM 1001/5000 IM B3	IC511
Czech republic	DC electric motor 1GDC-355-04, 375kW, 4pole, 460V, S1, IP23S, IC06, IM 1001 +external cooling 3x400V	IC06
Czech republic	Asynchronous electric motor H27R-710-06, 500kW, 6pole, Y6000V, 50Hz, 710-IM B3	IC511

Czech republic	Asynchronous electric motor, 600kW, 593 ot., D400V, 50Hz, IP55, IM B3	IC411
Czech republic	Asynchronous electric motor, H17RL-355-04, 500 kW, 4pole, 400V/690V, IC411, IP55, IM B	IC411
Czech republic	Asynchronous electric motor H27R-355-4, 250kW, 4pole, Y6000V, 50Hz, IM 1001, IC511	IC511
Czech republic	Asynchronous electric motor H27R-355Z-4, 315kW, 4pole, 6000V, IC511, IM 1001	IC511
Czech republic	Asynchronous electric motor H27RT- 355Y-4, 315kW, 4pole, Y6000V, 50Hz, S1, IP55, Izol F, IC511,	IC511
Czech republic	Asynchronous electric motor H27R355/500-6-200kW, 6pole, Y6000V, 50 Hz, S1, IP54, Izol F, IC511, IM B3	IC511
Czech republic	Asynchronous electric motor H17RL-315-04, 250kW, 4pole, IC411, IP55, IM B3	IC411
Estonia	Asynchronous electric motor H17RL-400-04, 350kW, 4pole, IC411, IP55, IM B3	IC411
Estonia	Asynchronous electric motor 3LC-355LZ-4, 315kW, 4pole, IC411, IP55, IM ??	IC411
Finland	Asynchronous electric motor 3LC-315L-4, 250kW, 4pole, 400/690V, 50Hz, S1, IP55, Izol F, IC411, IM V1	IC411
Finland	Asynchronous electric motor 3LC-355LX-4, 400kW, 4pole, 400/690V, 50Hz, S1, IP55, temp. class F/F, IC411, IM V1	IC411
Netherlands	Asynchronous electric motor 2LC-355LX-2, 400kW, 2pole, IC411, IP55, IM B3	IC411
Jordan	Asynchronous electric motor H17R-355-06, 380kW, 6pole, 6600V, IC411, IP55, IM B3	IC411
Jordan	Asynchronous electric motor 3LC-355LX-4, 400kW, temp. class F, IC411, IP55, IM V5,	IC411
Mali	Asynchronous electric motor H17RT-355/400-4, 375kW 3300V 4pole, Frame: 1LA1400,IP55, IM B3	IC511
Mali	Asynchronous electric motor H17RT-355/400-4,375kW 3300V 4pole, Frame: 1LA1401,IP55, IM B3	IC511
Mali	Asynchronous electric motor VFD duty H17RL-355-04, 355kW, 4pole, Y525V, 50Hz, IC411, IP55, IM B3	IC411
Mali	Asynchronous electric motor VFD duty H17RL-355-04, 355kW, 4pole, Y525V, 50Hz, IC411, IP55, IM B4	IC411
Mali	Asynchronous electric motor H17RT-355/400-4, 375kW, 3300V 4pole, FRAME: 1LA 1400	IC511
Germany	Asynchronous electric motor H17R-315-04-485, 210kW, 4pole, Y6000V, 50Hz, S1, IP55, Izol F/B, IC411, IP55, IM B3	IC411
Poland	Asynchronous electric motor H17RL-400-06, 400kW, 6pole, Y500V, temp. class F/F, IC411, IP55, IM B3	IC411

Poland	Asynchronous electric motor H17R-355H6KC, 200kW, 6pole, 50Hz, 6000V, IM1001, IM B3, insulation class F	IC411
Poland	Asynchronous electric motor H17RL-355M4, 200kW, 500V, 1486 obr	IC411
Russia	Asynchronous electric motor H17R-SR-355-4, 250 kW, 4pole, IC411 special MV slip ring motor IP55,IM B3,6000V	IC411
Slovakia	Asynchronous electric motor H17RL-355L-4, 260kW, 4pole, D400V, 50Hz, S1, IP55, temp.class F, IC411, P55 IM B3	IC411
Slovakia	Asynchronous electric motor H17RL-355L-4, 260kW, 4pole, D400V, 50Hz, S1, IP55, temp.class F, IC411, P55 IM B4	IC411
Slovakia	Asynchronous electric motor 4LC-315L2-4, 200kW, D400V, 50Hz, S1, IC411, IP55, Izol F, IM B3	IC411
Slovenia	Asynchronous electric motor with copper bar rotor, H17R-400-04, 450kW, 4pole, Y6000V, IC411, IP55, IM B3 DOL starting	IC411
Slovenia	Asynchronous electric motor with copper bar rotor, H17R-400-04, 450kW, 4pole, Y6000V, IC411, IP55, IM B3 DOL starting	IC411
Slovenia	Asynchronous electric motor H27R-500-06, 500kW, 6pole, Y6000V, temp. class F/F, IM B3	IC611
Slovenia	Slip ring asynchronous electric motor VYBO type H27R-400-04, 500kW 4 pole, Y6000V, 50Hz, S1, IP54, Izol F, IM B3	IC616
Slovenia	Slip ring asynchronous electric motor 1SR-400-06, 200kW, 6pole, 400V, 50Hz, S1, IP54, temp. class F, IC511, RAL7030	IC511
Slovenia	Slip ring asynchronous electric motor 1SR-400-06, 200kW, 6pole, 400V, 50Hz, S1, IP54, temp. class F, IC511, RAL7030	IC511
Slovenia	Asynchronous electric motor H17RL-355-400-12, 200kW, 12pole, 400/690V (D/Y), 50Hz, S1, IP55, IC411, RAL5015, IM V1	IC411
Slovenia	Asynchronous electric motor H17R-400-04, 450kW, 4pole, Y6000V, CU rotor, IC411, IP55, IM B3	IC411
Slovenia	Asynchronous electric motor H17R-355-04, 200kW, 4pole, Y6000V, 50Hz, S1, IP54, Izol F, IC411, IM 1001	IC411
Taiwan	Asynchronous electric motor H17R-355-06, 315kW, 6pole, IC411, IP55, IM B3, 3000V	IC411
Taiwan	Asynchronous electric motor 3LC-355L-6, 300HP (220kW), 6pole, IC411, IP55, IM B3	IC411
Italy	Asynchronous electric motor VFD duty 3LC-355M-4, 250kW, 4pole, D400V, S1, IP55, Izol F, temp.Rise B, IC411, IM B3	IC411
Italy	Asynchronous electric motor H17RL-400-02, 510kW, 2pole, D440V, 60Hz, IC411, IP55, IM B3	IC411
Italy	Asynchronous electric motor H17RL-315-04, 315kW, 4pole, D400V, 50Hz, S9, IP55, Izol F, IC411, IM B3	IC411
Turkey	Asynchronous electric motor H17RL-355-06, 480kW, 6pole, Izol F, temp. rise 110K, IC411, IP55, IM B3	IC411

Slovakia	Asynchronous electric motor for VFD H17RL-400-06,560kW,690V,6poles, IC411	IC411
Czech republic	Asynchronous electric motor H17R-355-4-4,500kW,1475RPM,6000V	IC411
Ukraine	Asynchronous electric motor H27RL630-8, 800kW,8poles,690V,VFD use, IC511	IC611
Czech republic	Asynchronous electric motor H27R-710-10,800kW,10poles,6000V,F/F,IMV 1-vertical	IC616
Czech republic	Asynchronous electric motor H27R-500-10, 800 kW 10 poles,IC666	IC666
Romania	Asynchronous electric motor t H27R-400-04-560-ZX; Un=6KV; Pn=500kW; Nn=1500 rpm, In=59,7A	IC611
Romania	Asynchronous electric motor H27R-SR-500-06 (630 kW,1000 rot/min. 6 kV,	IC01
Czech republic	Asynchronous electric motor H27R-710-08, 630 kW, 740 ot., 500V914A. 50Hz, SI, IP55	IC511
Poland	DC motor 1GDC-400L, 620 kW, 520V, 1200A, Izol F, IC01, IP23, IM B3	IC06
Czech republic	Slip ring asynchronous electric motor H27R-SR-500-06 / 710, 800kW; IM B3	IC611
Romania	Asynchronous electric motor H27R-ODP-500-06 /630 kW/1000 rot/min/	IC01
Iran	Asynchronous electric motor H17RL-400-4-4-Z, 690 kW/:1491rpms.	IC411
Czech republic	Asynchronous electric motor H17R-400-4,630 kW, 6000 V, IM4 411/IMV1	IC411
Slovakia	Asynchronous electric motor H17R400-02-500, 560 kW, 2-pole, B3	IC411
Czech republic	Asynchronous electric motor H27RT-600-4,630 kW, 1475 RPM, 6000 V	IC511
Czech republic	Asynchronous electric motor H27RT-710-6,630 kW, 6 pol, Y6000V, IM1001	IC511

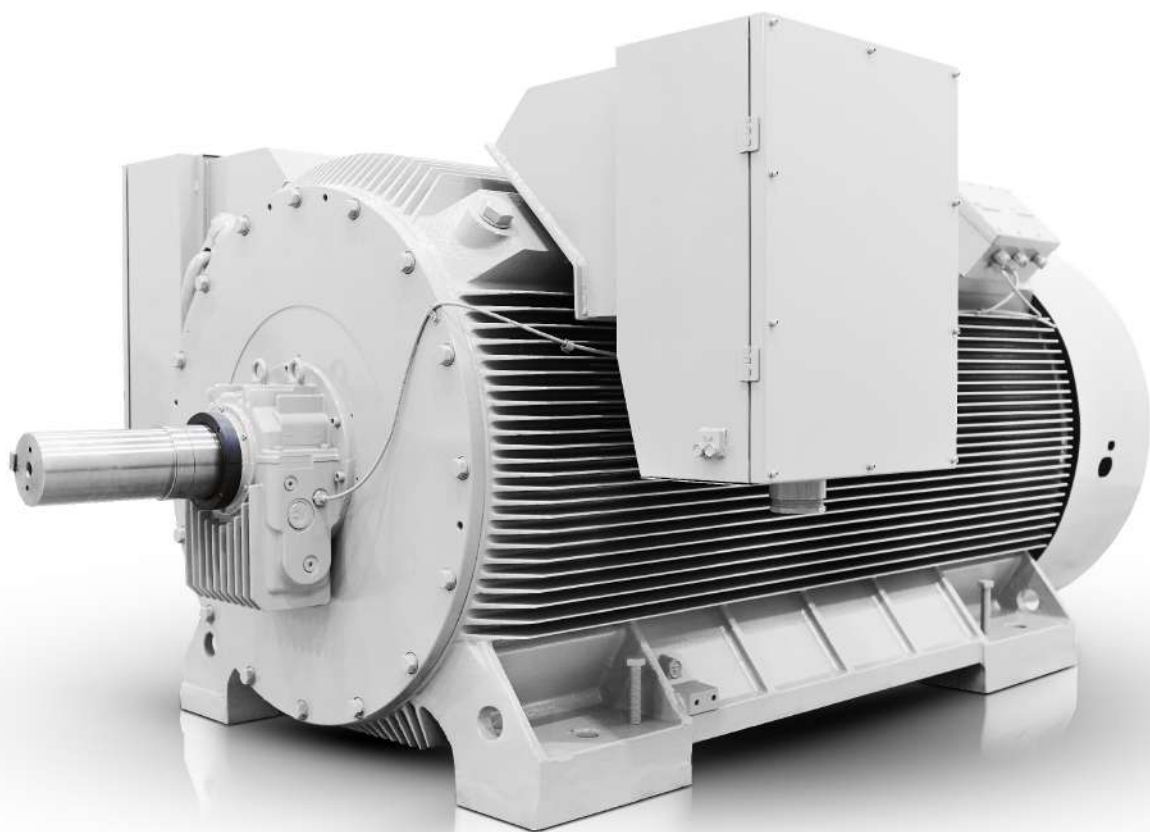
Selected reference
projects with photos:



SOLUTIONS FOR INDUSTRY

Special compact high power HV motor H17R-560/630-02

VYBO Electric motor type	Asynchronous electric motor H17R-630-02
Country	Poland
Application	High pressure pump KSB
Rated power	2400 kW
Rate voltage	6000V
Number of poles	2 pole
Rated speed	2991 rpm
Rated frequency	50Hz
Type of construction	Cast iron
Frame size / Shaft height	560/630
Protection class	IP55
Cooling type	IC411
Motor standard	IEC / EN 60034-1
Weight	10 000kg
Insulation class	F
Special execution	sleeve bearings-RENK





Modular HV electric motors H27R630-6 with high torque and copper bar rotor

VYBO Electric motor type	Asynchronous electric motor H27R630-6
Country	Czech republic
Application	Fan
Rated power	3000 kW
Rate voltage	6000V
Number of poles	6 pole
Rated speed	991 rpm
Rated frequency	50Hz
Type of construction	IM B3
Frame size / Shaft height	630mm
Protection class	IP55
Cooling type	IC611
Motor standard	IEC / EN 60034-1
Weight	12 000 kg
Insulation class	F
Special execution	Selv cooled sleeve bearings,copper bar high starting torque rotor
Quantity	3 pcs







Special double speed HV electric motors H27RG-800-1120-K10/12

VYBO Electric motor type	Asynchronous electric motor H27RG-800-1120-K10/12
Country	Czech republic
Application	flue gas fan
Rated power	1700/1000 kW
Rate voltage	6000V
Number of poles	10/12 pole
Rated speed	590rpm/494rpm
Rated frequency	50Hz
Type of construction	IM 1001
Frame size / Shaft height	800/1120
Protection class	IP23
Cooling type	IC01
Motor standard	IEC / EN 60034-1
Weight	15 000 kg
Insulation class	F
Special execution	Double speed motors with double shaded windings



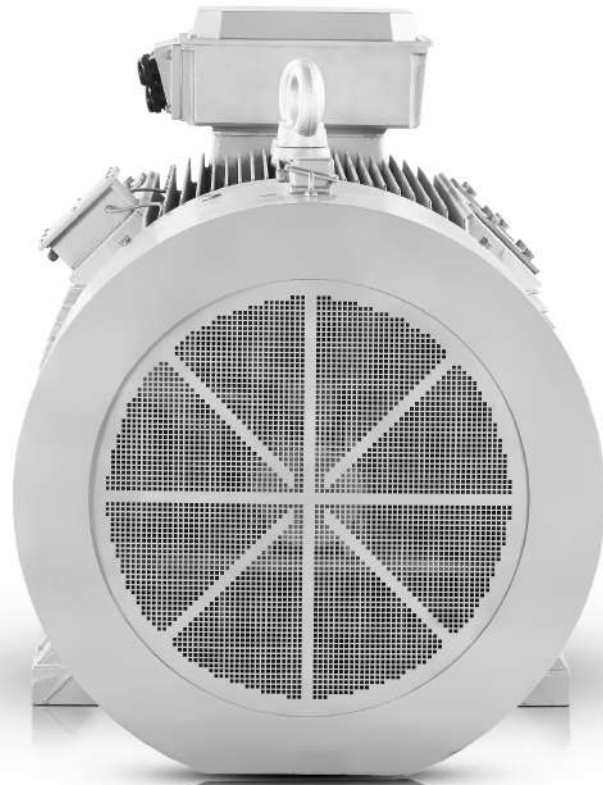




VFD low voltage compact electric motor H17RL560-04

VYBO Electric motor type	Asynchronous electric motor H17RL560-04
Country	Estonia
Application	Fan
Rated power	1500 kW
Rate voltage	660V
Number of poles	4 pole
Rated speed	1491 rpm
Rated frequency	50Hz
Type of construction	IM B3
Frame size / Shaft height	560mm
Protection class	IP55
Cooling type	IC411
Motor standard	IEC / EN 60034-1
Weight	7800kg
Insulation class	F
Special execution	VFD winding with insulated bearings and sheilds









HV compact electric motor H17R-560-6

VYBO Electric motor type	Asynchronous electric motor H17R-560-6
Country	Estonia
Application	Pump
Rated power	1250 kW
Rate voltage	6000V
Number of poles	6 pole
Rated speed	994 rpm
Rated frequency	50Hz
Type of construction	Cast iron
Frame size / Shaft height	560mm
Protection class	IP55
Cooling type	IC411
Motor standard	IEC / EN 60034-1
Weight	8800kg
Insulation class	F
Special execution	Vibration sensors





Slip ring high voltage asynchronous electric motor H27R-SR-500-04

VYBO Electric motor type	Slip ring asynchronous electric motor H27R-SR-500-04
Country	Great Britain
Application	Ball mill
Rated power	1250 kW
Rate voltage	10 000V
Number of poles	4 pole
Rated speed	1485 rpm
Rated frequency	50Hz
Type of construction	Welded steel
Frame size / Shaft height	500mm
Protection class	IP55
Cooling type	IC611
Motor standard	IEC / EN 60034-1
Weight	9700kg
Insulation class	F
Special execution	-

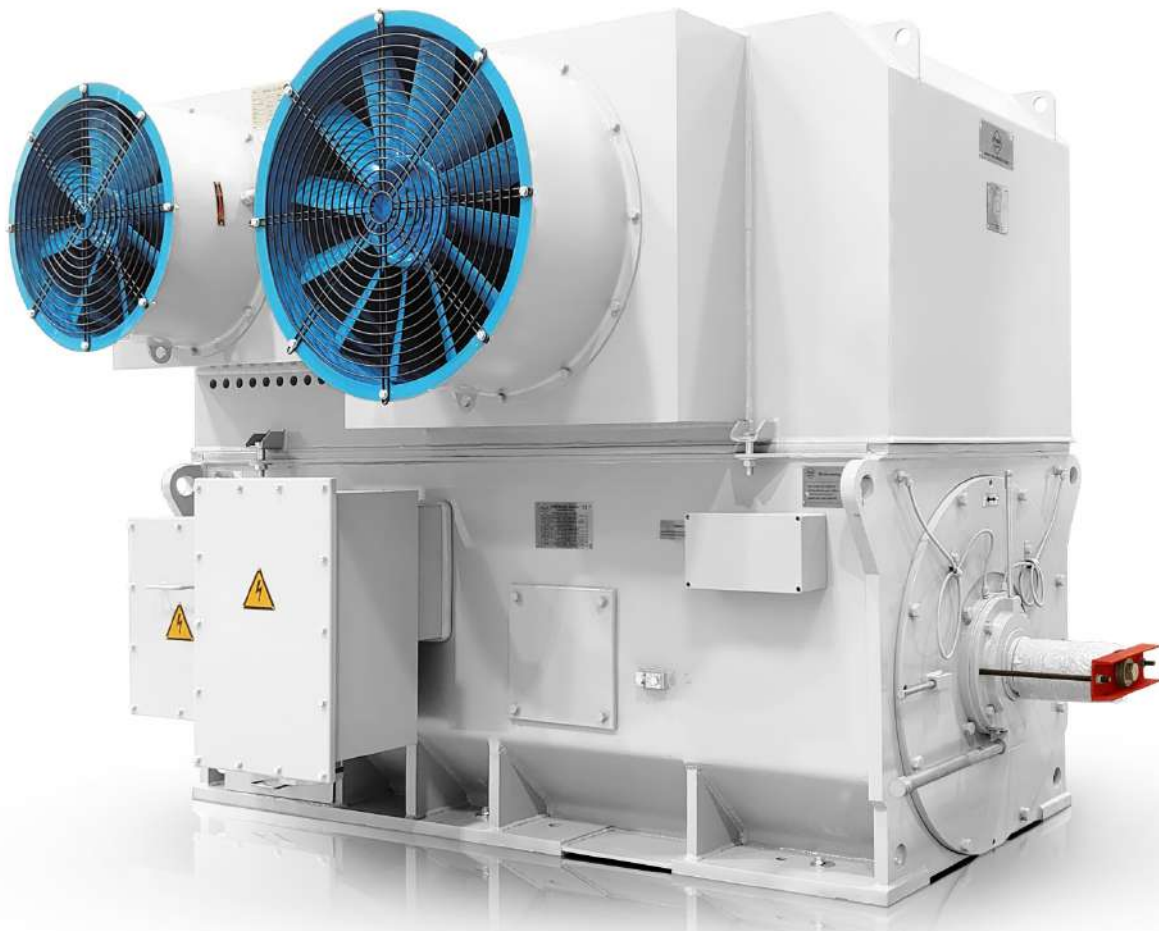






Slip ring asynchronous electric motor with cooling IC616 on side VYBO type H27R-400-04

VYBO Electric motor type	Slip ring asynchronous electric motor VYBO type H27R-400-04
Country	Slovenia
Application	mine hoist
Rated power	500 kW
Rate voltage	6000V
Number of poles	4 pole
Rated speed	1470 rpm
Rated frequency	50Hz
Type of construction	welded steel
Frame size / Shaft height	400mm
Protection class	IP55
Cooling type	IC616
Motor standard	IEC / EN 60034-1
Weight	4700kg
Insulation class	F
Special execution	side cooling IC616





Modular Asynchronous electric motor with copper bar rotor H27R-630-06-500

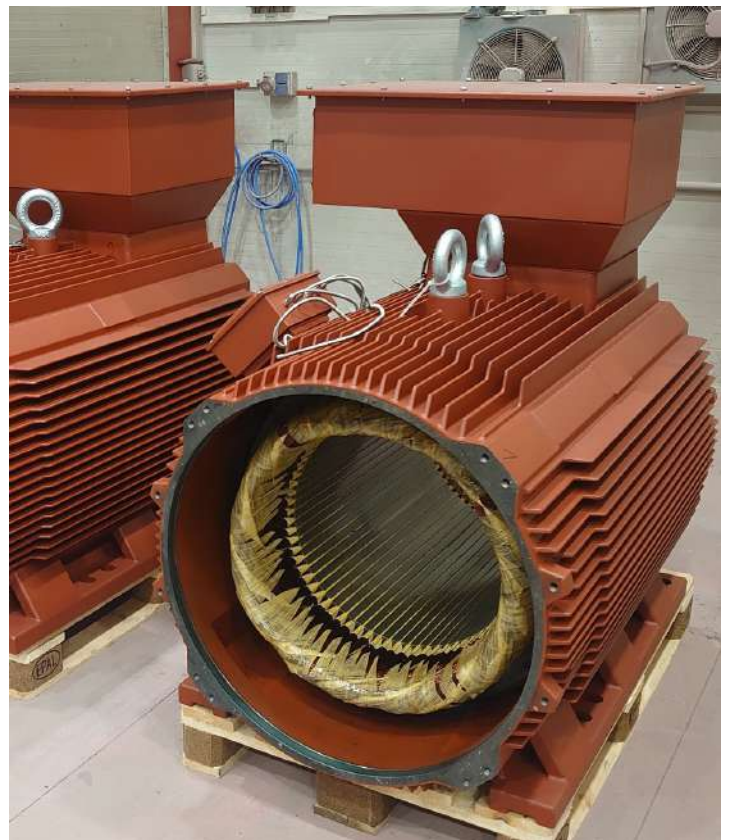
VYBO Electric motor type	Asynchronous electric motor H27R-630-06-500
Country	Spain
Application	fan
Rated power	1750 kW
Rate voltage	6000V
Number of poles	6 pole
Rated speed	990 rpm
Rated frequency	50Hz
Type of construction	IM B3
Frame size / Shaft height	500
Protection class	IP55
Cooling type	IC611
Motor standard	IEC / EN 60034-1
Weight	7800kg
Insulation class	F
Special execution	Insulation class H
Quantity	2





Special higher power pressurised asynchronous electric motor H17RL-400-04

VYBO Electric motor type	Asynchronous electric motor H17RL-400-04
Country	Spain
Application	iron rolling mill
Rated power	800 kW S1/ 1500kW S6-15%
Rate voltage	400/690V
Number of poles	4 pole
Rated speed	1491 rpm
Rated frequency	50Hz
Type of construction	IM B3
Frame size / Shaft height	400mm
Protection class	IP55
Cooling type	IC411
Motor standard	IEC / EN 60034-1
Weight	4000kg
Insulation class	F
Special execution	VFD using,H class insulation,silencers,external cooling system IC416,air difusors
Quantity	4



Special VFD motor with copper bar rotor H17RL-450-06

VYBO Electric motor type	Asynchronous electric motor H17RL-450-06
Country	Spain
Application	fan
Rated power	900 kW
Rate voltage	690V
Number of poles	6 pole
Rated speed	980 rpm
Rated frequency	50Hz
Type of construction	IM B3
Frame size / Shaft height	450mm/500mm
Protection class	IP55
Cooling type	IC416
Motor standard	IEC / EN 60034-1
Weight	5800kg
Insulation class	F
Special execution	Copper bar rotor,formed VFD winding,insulation bearings,insulations shield ,IC416,insulation class H



Vertical ultra high efficiency asynchronous electric motor H17R-355-04-CR with double angular bearings

VYBO Electric motor type	Asynchronous electric motor H17R-355-04-CR
Country	Slovenia
Application	pumps
Rated power	500 kW
Rate voltage	6000V
Number of poles	4 pole
Rated speed	1487 rpm
Rated frequency	50Hz
Type of construction	IM V1+double angular bearings
Frame size / Shaft height	355mm
Protection class	IP55
Cooling type	IC411
Motor standard	IEC / EN 60034-1
Weight	3200kg
Insulation class	F
Special execution	Double angular bearings for very high axial pump pressures,copper bar rotors,very gigh efficiency
Quantity	12pcs





Asynchronous electric motor

H17R-315-04-10 pcs

VYBO Electric motor type	Asynchronous electric motor H17R-315-04
Country	Poland
Application	Fuel pumps
Rated power	200 kW
Rate voltage	6000V
Number of poles	4 pole
Rated speed	1490 rpm
Rated frequency	50Hz
Type of construction	IM B3
Frame size / Shaft height	315mm
Protection class	IP55
Cooling type	IC411
Motor standard	IEC / EN 60034-1
Weight	2200kg
Insulation class	F
Special execution	Copper bar rotor
Quantity	10pcs







Asynchronous electric motor H17RL-450-06

VYBO Electric motor type	Asynchronous electric motor H17RL-450-06
Country	Chille
Application	Wood shreder
Rated power	900 kW
Rate voltage	400/690V
Number of poles	6 pole
Rated speed	980 rpm
Rated frequency	50Hz
Type of construction	IM B3
Frame size / Shaft height	450mm
Protection class	IP55
Cooling type	IC416
Motor standard	IEC / EN 60034-1
Weight	5900kg
Insulation class	F
Special execution	IC416,VFD winding,higher power pressurised motor
Quantity	2pcs



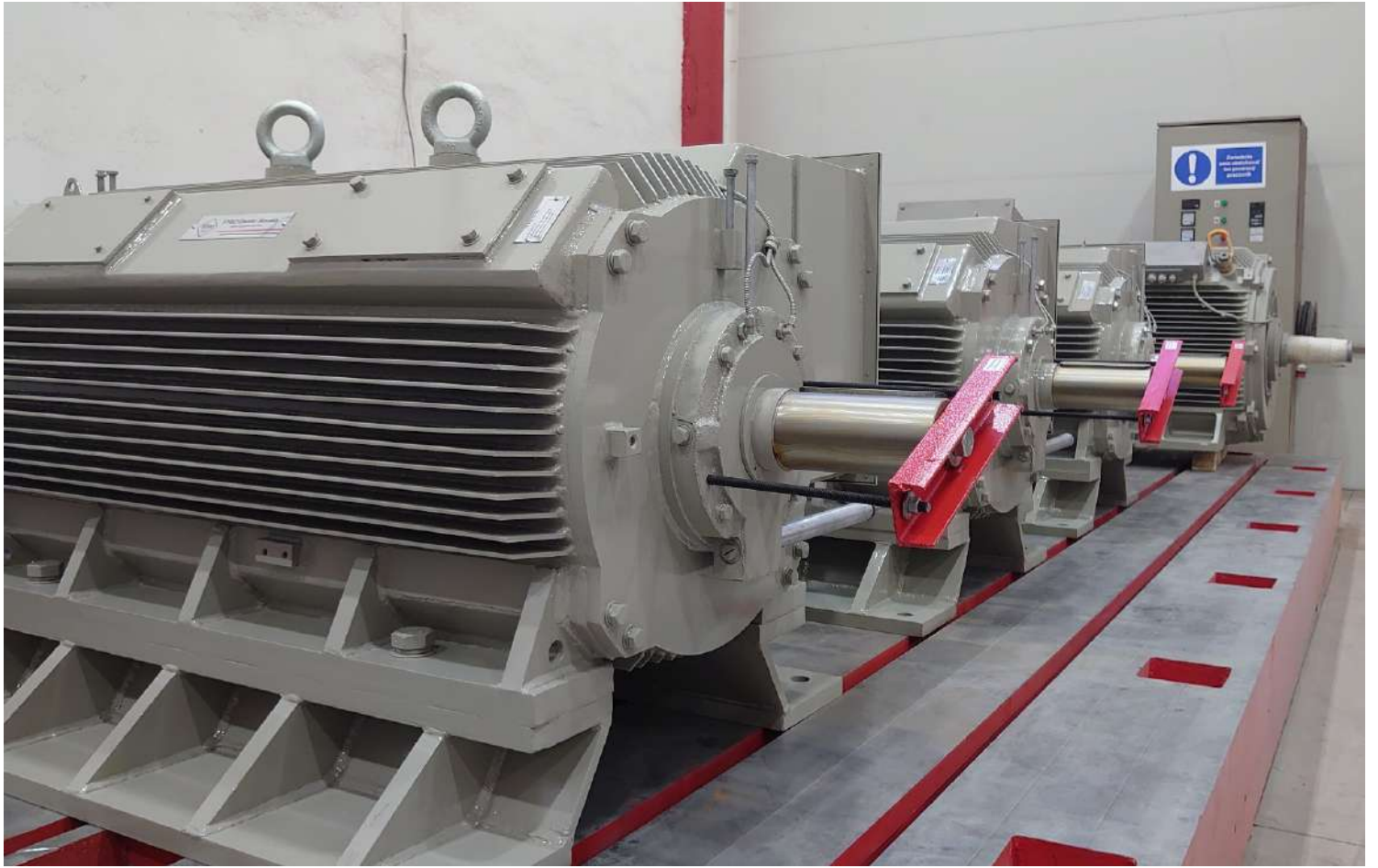




Asynchronous electric motor H17R-315-500-CR-04- 9pcs

VYBO Electric motor type	Asynchronous electric motor H17R-315-500-CR-04
Country	Slovenia
Application	
Rated power	200 kW
Rate voltage	6000V
Number of poles	4 pole
Rated speed	1488 rpm
Rated frequency	50Hz
Type of construction	IM 1001
Frame size / Shaft height	
Protection class	IP54
Cooling type	IC411
Motor standard	IEC / EN 60034-1
Weight	
Insulation class	F
Special execution	CU rotor
Quantity	9pcs





Asynchronous electric motor

H27R-560-06 IP33

VYBO Electric motor type	Asynchronous electric motor H27R-560-06
Country	Czech republic
Application	boiler fan
Rated power	900 kW
Rate voltage	6000V
Number of poles	6 pole
Rated speed	991 rpm
Rated frequency	50Hz
Type of construction	IM B3
Frame size / Shaft height	560mm
Protection class	IP33
Cooling type	IC016
Motor standard	IEC / EN 60034-1
Weight	6300kg
Insulation class	F
Special execution	Special air cooling system

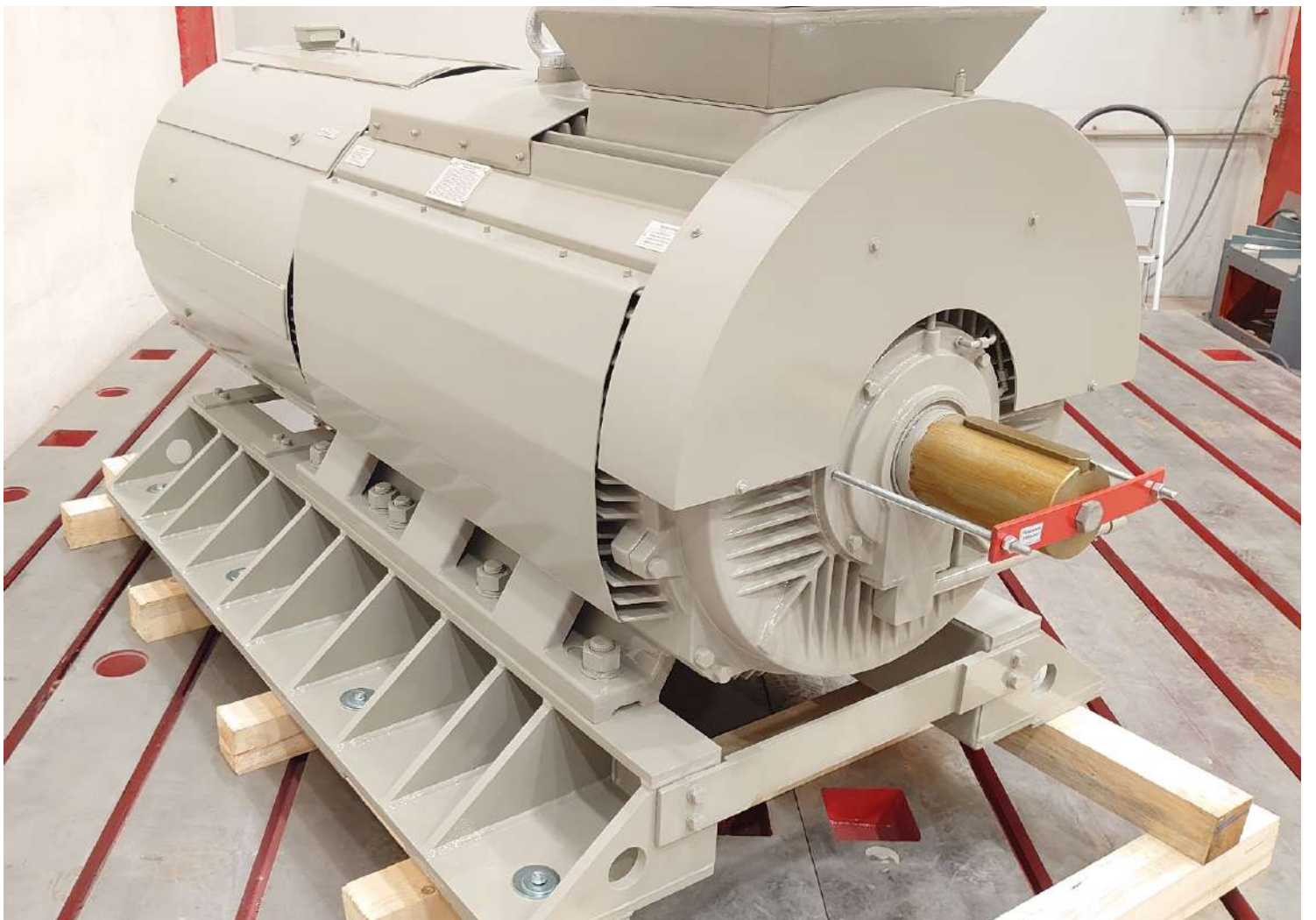
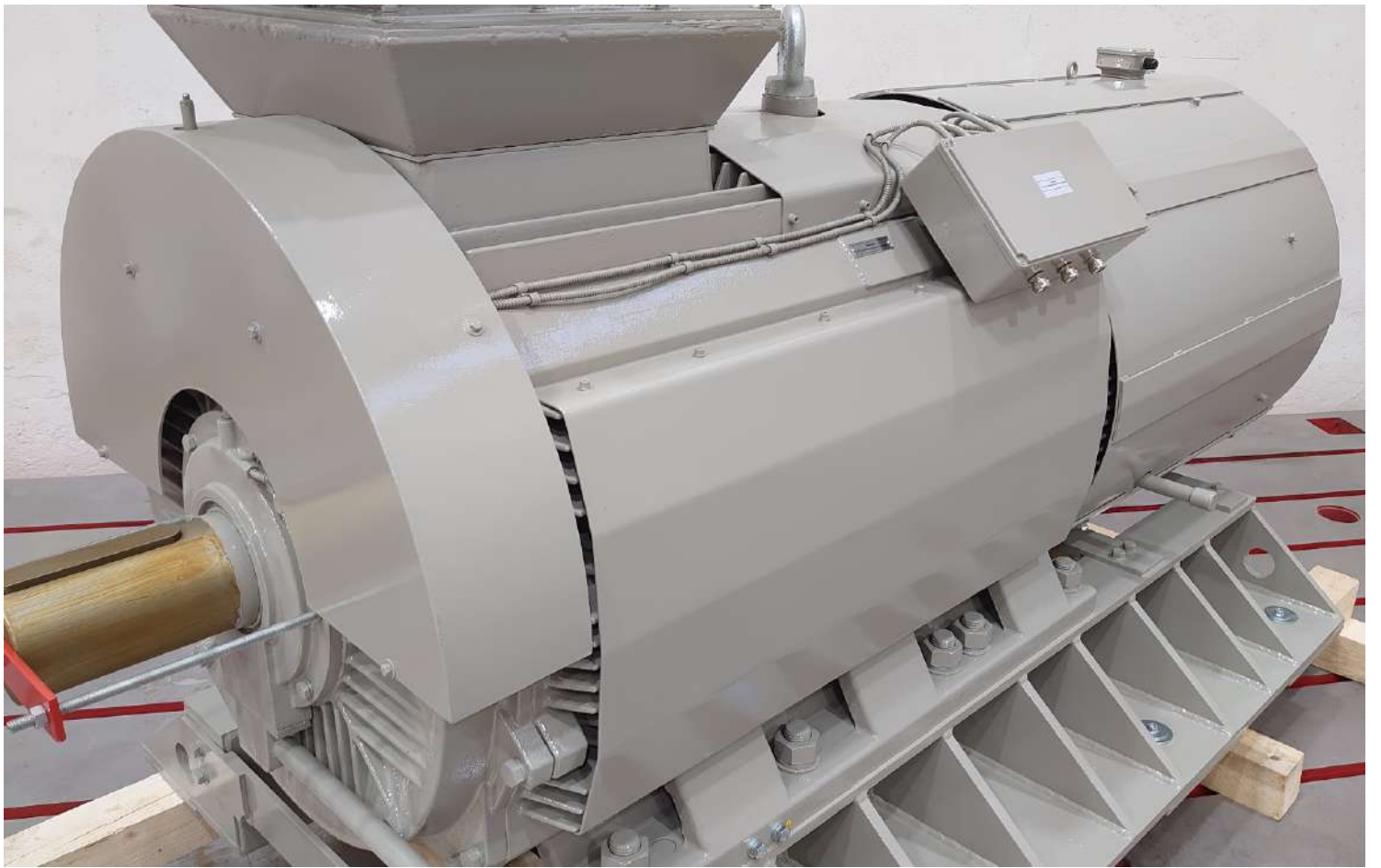




Special asynchronous electric motor H17RL-400-04-630

VYBO Electric motor type	Asynchronous electric motor H17RL-400-04-630
Country	Sweden
Application	hydraulic press of high temperature forging
Rated power	700 kW
Rate voltage	500V
Number of poles	4 pole
Rated speed	1492 rpm
Rated frequency	50Hz
Type of construction	cast iron+welded steel combination
Frame size / Shaft height	400mm/630mm
Protection class	IP55
Cooling type	IC416
Motor standard	IEC / EN 60034-1
Weight	4300kg
Insulation class	H
Special execution	special protection of the cast iron structure against high ambient temperature (ambient temp more than 60 degrees)





Special slip ring asynchronous electric motor H30R-SR-630-06-IC37

VYBO Electric motor type	Slip ring Asynchronous electric motor H30R-SR-630-06
Country	Croatia
Application	cement mill
Rated power	860 kW
Rate voltage	6000V
Number of poles	6 pole
Rated speed	987 rpm
Rated frequency	50Hz
Type of construction	welded steel
Frame size / Shaft height	630mm
Protection class	IP55
Cooling type	IC37
Motor standard	IEC / EN 60034-1
Weight	7800kg
Insulation class	F
Special execution	Special cooling IC37



Special tube cooling asynchronous electric motor IC511 VYBO Electric H27R-RT-560-06

VYBO Electric motor type	Tube cooling IC 511 asynchronous electric motor VYBO Electric H27R-560-06
Country	Slovenia
Application	coal mill
Rated power	500 kW
Rate voltage	6000V
Number of poles	6 poles
Rated speed	990 rpm
Rated frequency	50Hz
Type of construction	welded steel with tube cooling
Frame size / Shaft height	560mm,600mm
Protection class	IP55
Cooling type	IC511
Motor standard	IEC / EN 60034-1
Weight	4300kg
Insulation class	F
Special execution	IC511 tube cooling
Quantity	4 pcs





Special electric motor with copper bar double cage rotor H17RDCR-500-06

VYBO Electric motor type	Asynchronous electric motor H17RDCR-500-06
Country	Croatia
Application	
Rated power	630 kW
Rate voltage	6000V
Number of poles	6 pole
Rated speed	991 rpm
Rated frequency	50Hz
Type of construction	IM B3
Frame size / Shaft height	
Protection class	IP55
Cooling type	IC411
Motor standard	IEC / EN 60034-1
Weight	
Insulation class	F
Special execution	Special copper bar double cage rotor



Asynchronous electric motor

H17R-368-04

VYBO Electric motor type	Asynchronous electric motor 17R-368-04
Country	Venezuela
Application	compressor
Rated power	1000Hp
Rate voltage	4160V
Number of poles	4 pole
Rated speed	1780 rpm
Rated frequency	60Hz
Type of construction	IM B3
Frame size / Shaft height	368mm
Protection class	IP55
Cooling type	IC411
Motor standard	NEMA
Weight	4200kg
Insulation class	F
Special execution	NEMA dimensions







Slip ring asynchronous electric motor H27R-TC-SR-630-06

VYBO Electric motor type	Slip ring asynchronous electric motor H27R-SR-630-06
Country	Germany
Application	mill
Rated power	950 kW
Rate voltage	6000V
Number of poles	6 pole
Rated speed	994 rpm
Rated frequency	50Hz
Type of construction	Welded steel with tube cooling
Frame size / Shaft height	630mm
Protection class	IP55
Cooling type	IC511
Motor standard	IEC / EN 60034-1
Weight	6300kg
Insulation class	F
Special execution	Special tube cooling frame





Slip ring asynchronous tubec cooling electric motor with cooling IC516 VYBO type H27R-560-06

VYBO Electric motor type	Slip ring asynchronous electric motor VYBO type H27R-560-06
Country	Ukraine
Application	Hammer mill
Rated power	400 kW
Rate voltage	6000V
Number of poles	6 pole
Rated speed	986 rpm
Rated frequency	50Hz
Type of construction	welded steel with tube cooling
Frame size / Shaft height	560mm
Protection class	IP55
Cooling type	IC516
Motor standard	IEC / EN 60034-1
Weight	4000kg
Insulation class	F
Special execution	cooling IC516

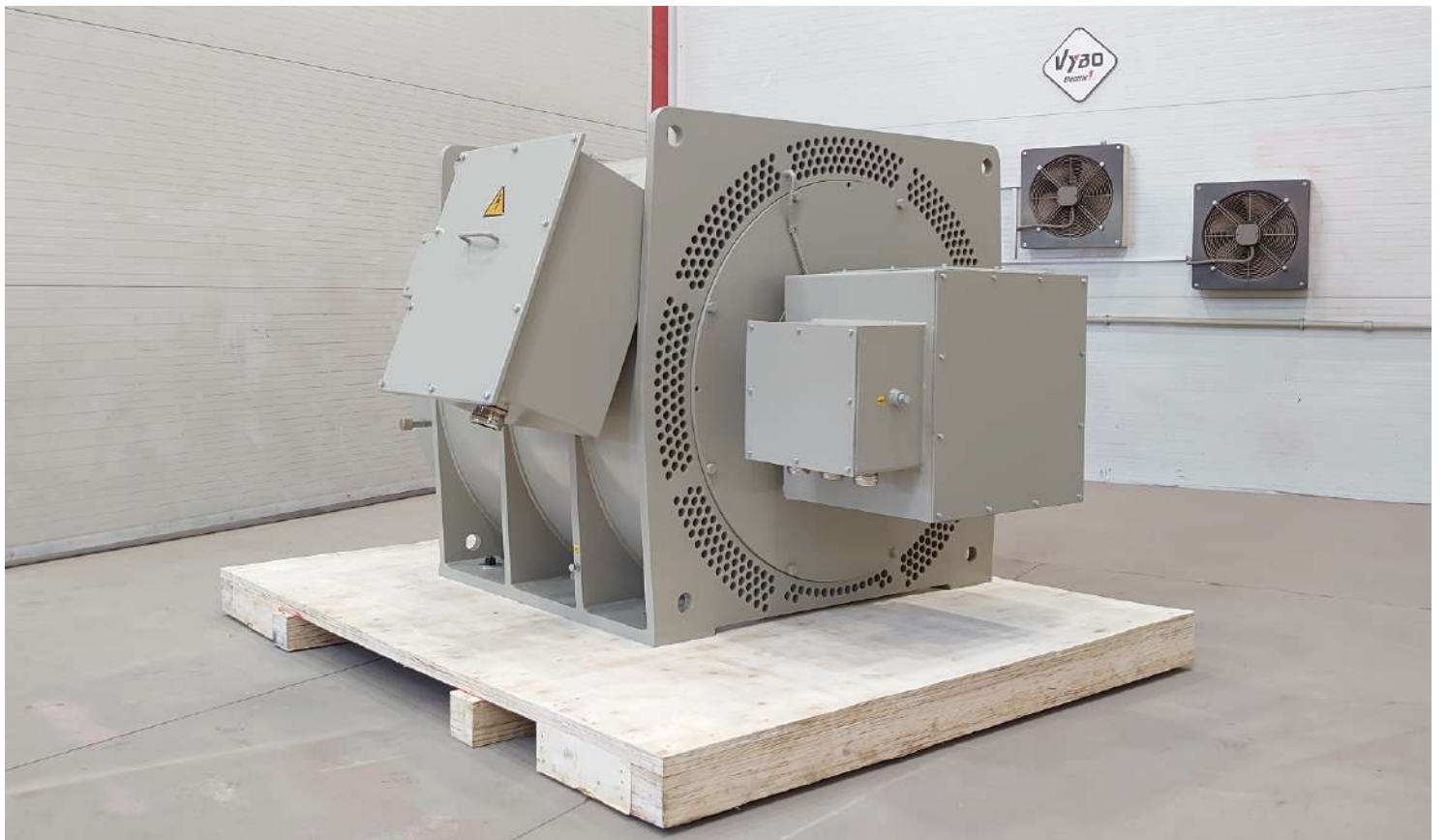




Slip ring asynchronous tubec cooling electric motor with cooling IC511 VYBO type H27R-560-06

VYBO Electric motor type	Slip ring asynchronous electric motor VYBO type H27R-630-06
Country	Ukraine
Application	Hammer mill
Rated power	500 kW
Rate voltage	6000V
Number of poles	6 pole
Rated speed	986 rpm
Rated frequency	50Hz
Type of construction	welded steel with tube cooling
Frame size / Shaft height	630mm
Protection class	IP55
Cooling type	IC511
Motor standard	IEC / EN 60034-1
Weight	4300kg
Insulation class	F
Special execution	cooling IC511, super short version



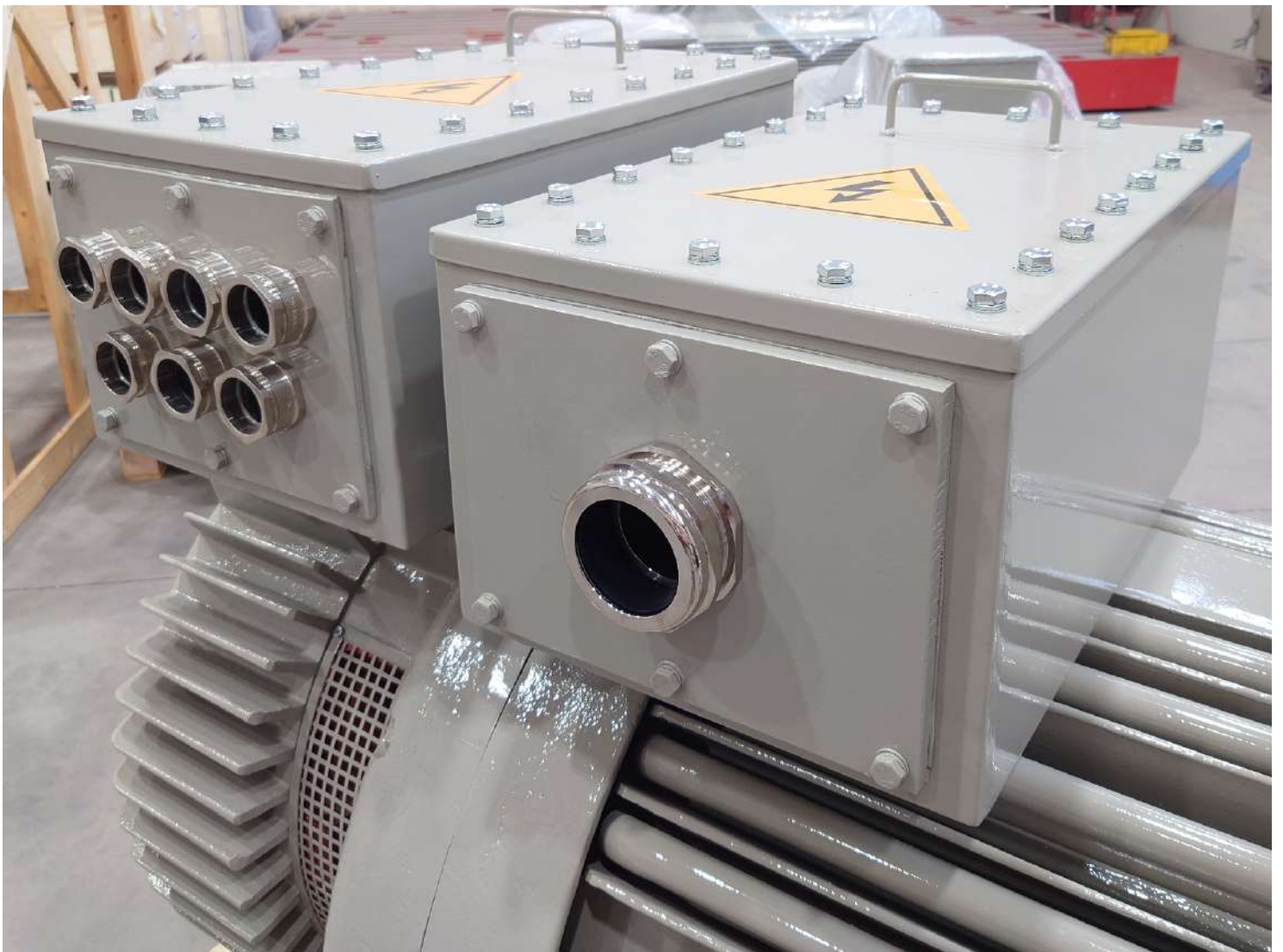
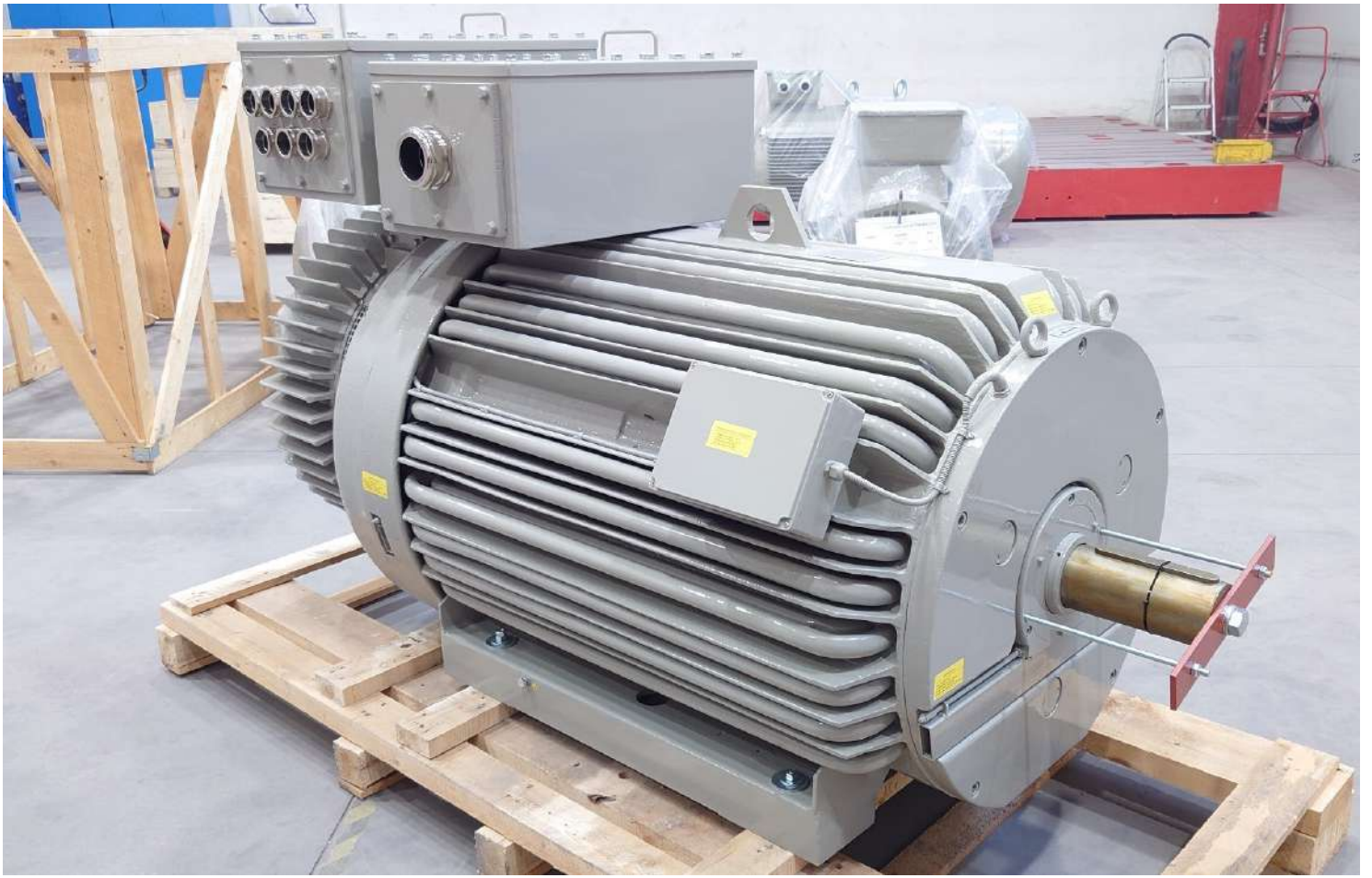




Tube/ribbed cooled slip ring asynchronous electric motor H17R-SR-355-06-400

VYBO Electric motor type	Slip ring Asynchronous electric motor H17R-SR-355-06-400
Country	Egypt
Application	Cement mill
Rated power	315 kW
Rate voltage	6300V
Number of poles	6 pole
Rated speed	985 rpm
Rated frequency	50Hz
Type of construction	IM B3
Frame size / Shaft height	355mm/400mm
Protection class	IP55
Cooling type	IC411/IC511
Motor standard	IEC / EN 60034-1
Weight	2500kg
Insulation class	F
Special execution	Special tube frame with ribbed combination





Modular Asynchronous electric motor H27R-500-06

VYBO Electric motor type	Asynchronous electric motor H27R-500-06
Country	Poland
Application	fan
Rated power	1900 kW
Rate voltage	6000V
Number of poles	6 pole
Rated speed	980 rpm
Rated frequency	50Hz
Type of construction	Modular welded steel
Frame size / Shaft height	500mm
Protection class	IP55
Cooling type	IC611
Motor standard	IEC / EN 60034-1
Weight	8900kg
Insulation class	H
Special execution	Copper bar rotor,H class insulation







Slip ring asynchronous electric motor with cooling IC511 VYBO type H27R-TC--SR-600-04

VYBO Electric motor type	Slip ring asynchronous electric motor VYBO type H27R-TC-SR-600-04
Country	Slovenia
Application	mine hoist
Rated power	500 kW
Rate voltage	6000V
Number of poles	4 pole
Rated speed	1470 rpm
Rated frequency	50Hz
Type of construction	welded steel with tube cooling IC511
Frame size / Shaft height	600mm
Protection class	IP55
Cooling type	IC511
Motor standard	IEC / EN 60034-1
Weight	4400kg
Insulation class	F
Special execution	Special tube cooling IC511







Slip ring high voltage asynchronous electric motor H27R-SR-560-06

VYBO Electric motor type	Slip ring asynchronous electric motor H27R-SR-560-06
Country	Czech republic
Application	Vertical mill
Rated power	800 kW
Rate voltage	6000V
Number of poles	6 pole
Rated speed	989 rpm
Rated frequency	50Hz
Type of construction	Modular welded steel
Frame size / Shaft height	560mm
Protection class	IP55
Cooling type	IC611
Motor standard	IEC / EN 60034-1
Weight	8700kg
Insulation class	F
Special execution	-





Special vertical Slip ring Asynchronous electric motor H27R-800-10

VYBO Electric motor type	Slip ring Asynchronous electric motor
Country	Spain
Application	Cement mill
Rated power	407 kW
Rate voltage	6300V
Number of poles	10 pole
Rated speed	590 rpm
Rated frequency	50Hz
Type of construction	IM V1
Frame size / Shaft height	800mm
Protection class	IP55
Cooling type	IC511
Motor standard	IEC / EN 60034-1
Weight	10 500 kg
Insulation class	F
Special execution	Service factor 2.3,shaft 420mmx 220mm



Asynchronous electric motor

H27R500-06 3pcs

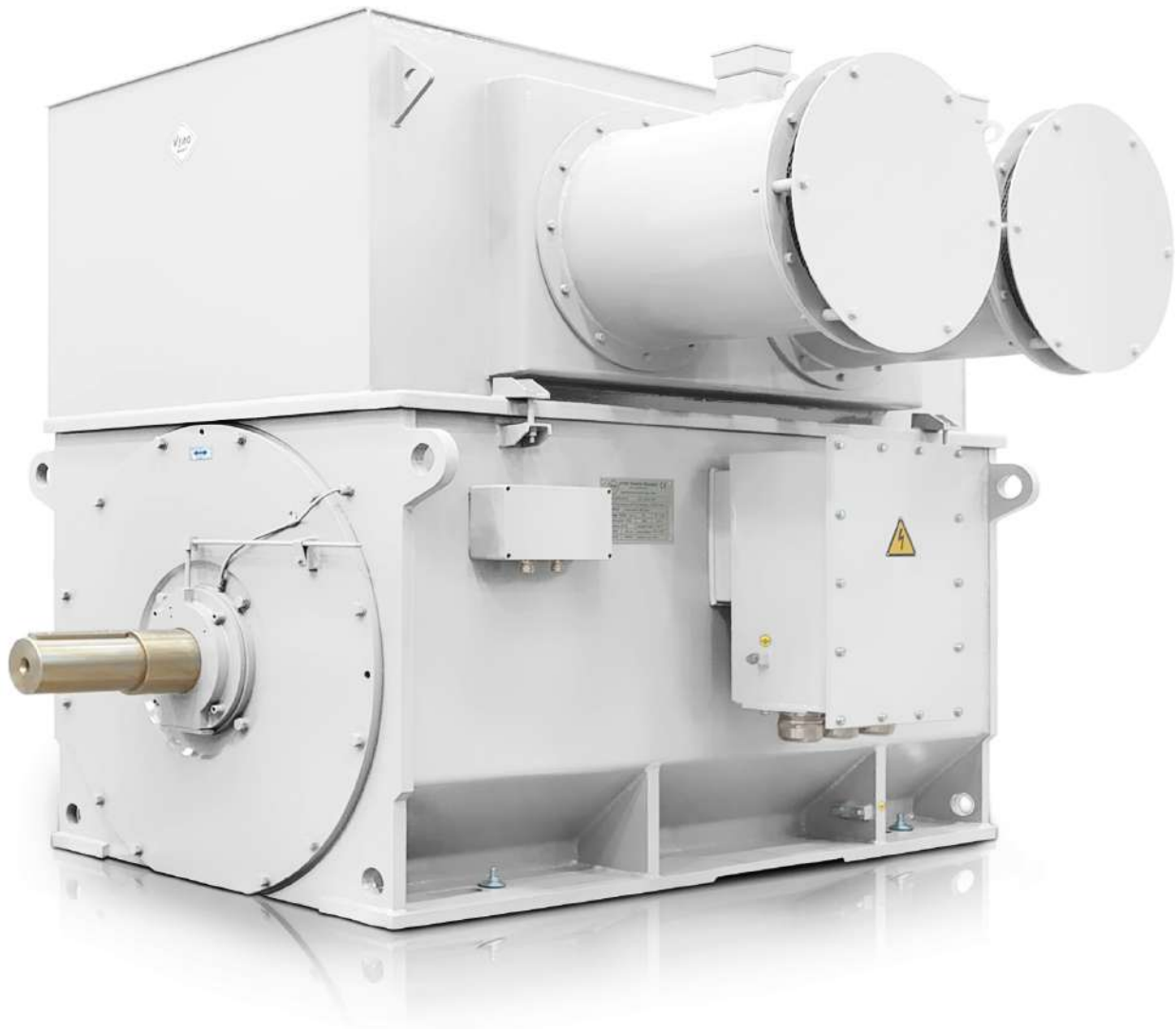
VYBO Electric motor type	Asynchronous electric motor H27R500-06
Country	Slovenia
Application	fan
Rated power	800 kW
Rate voltage	6000V
Number of poles	6 pole
Rated speed	990 rpm
Rated frequency	50Hz
Type of construction	Modular welded steel
Frame size / Shaft height	500mm
Protection class	IP55
Cooling type	IC611
Motor standard	IEC / EN 60034-1
Weight	6500kg
Insulation class	F
Special execution	-
Quantity	3pcs



Asynchronous electric motor

H27R-500-10

VYBO Electric motor type	Asynchronous electric motor H27R-500-10
Country	Ukraine
Application	Hammer mill
Rated power	800 kW
Rate voltage	6000V
Number of poles	10 pole
Rated speed	593 rpm
Rated frequency	50Hz
Type of construction	Modular welded steel
Frame size / Shaft height	500mm
Protection class	IP55
Cooling type	IC666
Motor standard	IEC / EN 60034-1
Weight	8900kg
Insulation class	F
Special execution	IC666 from side



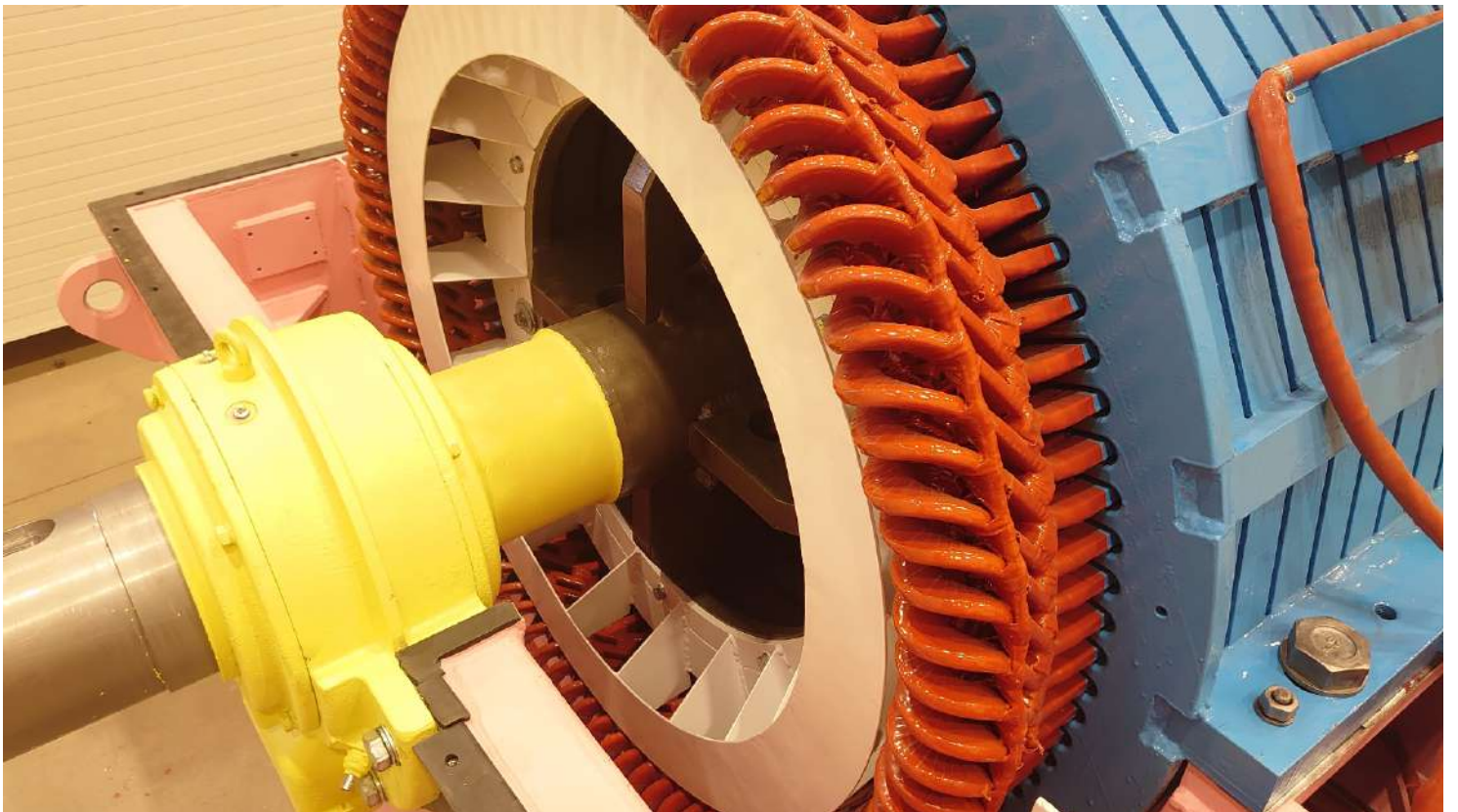
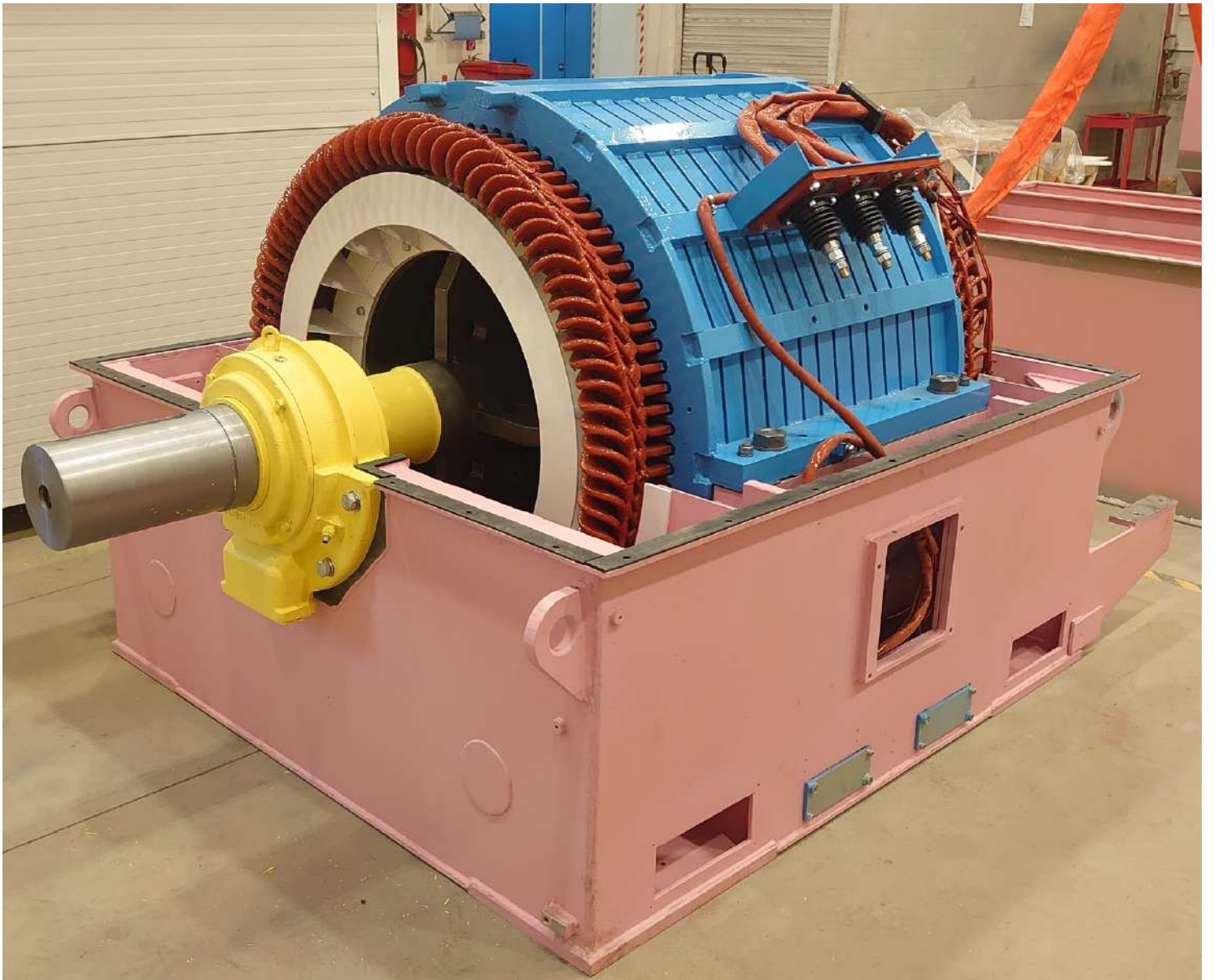


Asynchronous electric motor

H27R-740-12

VYBO Electric motor type	Asynchronous electric motor H27R-740-12
Country	North Macedonia
Application	Coal mill
Rated power	800 kW
Rate voltage	6000V
Number of poles	12 pole
Rated speed	493 rpm
Rated frequency	50Hz
Type of construction	Modular welded steel
Frame size / Shaft height	710mm/740mm
Protection class	IP55
Cooling type	IC611
Motor standard	IEC / EN 60034-1
Weight	10000 kg
Insulation class	F
Special execution	Copper bar rotor





Asynchronous electric motor H27R-630-12

VYBO Electric motor type	Asynchronous electric motor H27R-630-10
Country	Singapore
Application	Pump
Rated power	800 kW
Rate voltage	6000V
Number of poles	10 pole
Rated speed	590 rpm
Rated frequency	50Hz
Type of construction	IM B3
Frame size / Shaft height	630mm
Protection class	IP55
Cooling type	IC611
Motor standard	IEC / EN 60034-1
Weight	9500kg
Insulation class	F
Special execution	Special frame









Welded steel ribbed cooled asynchronous electric motor H17R-500-04

VYBO Electric motor type	Asynchronous electric motor H17R-500-04
Country	Mali
Application	Pump
Rated power	800 kW
Rate voltage	3300V
Number of poles	4 pole
Rated speed	1480 rpm
Rated frequency	50Hz
Type of construction	Welded steel ribbed frame
Frame size / Shaft height	500mm
Protection class	IP55
Cooling type	IC511
Motor standard	IEC / EN 60034-1
Weight	6200kg
Insulation class	F
Special execution	Welded steel frame,copper bar rotor
Quantity	2







Address

VYBO ELECTRIC a. s. | tel: +421 944 105 361
Radlinského 18 | e-mail: mv@vyboelectric.eu
052 01 Spišská Nová Ves
Slovenská republika

www.vyboelectric.com



SOLUTIONS FOR INDUSTRY